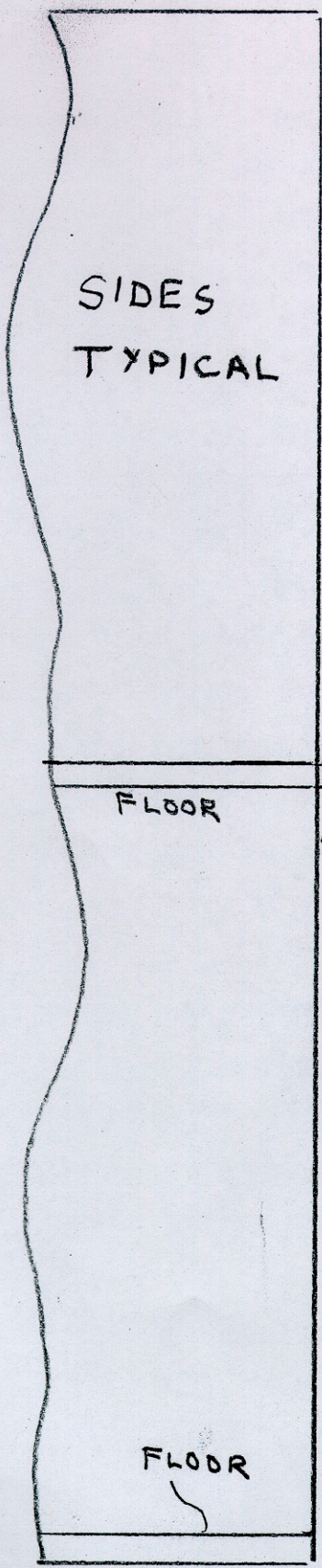
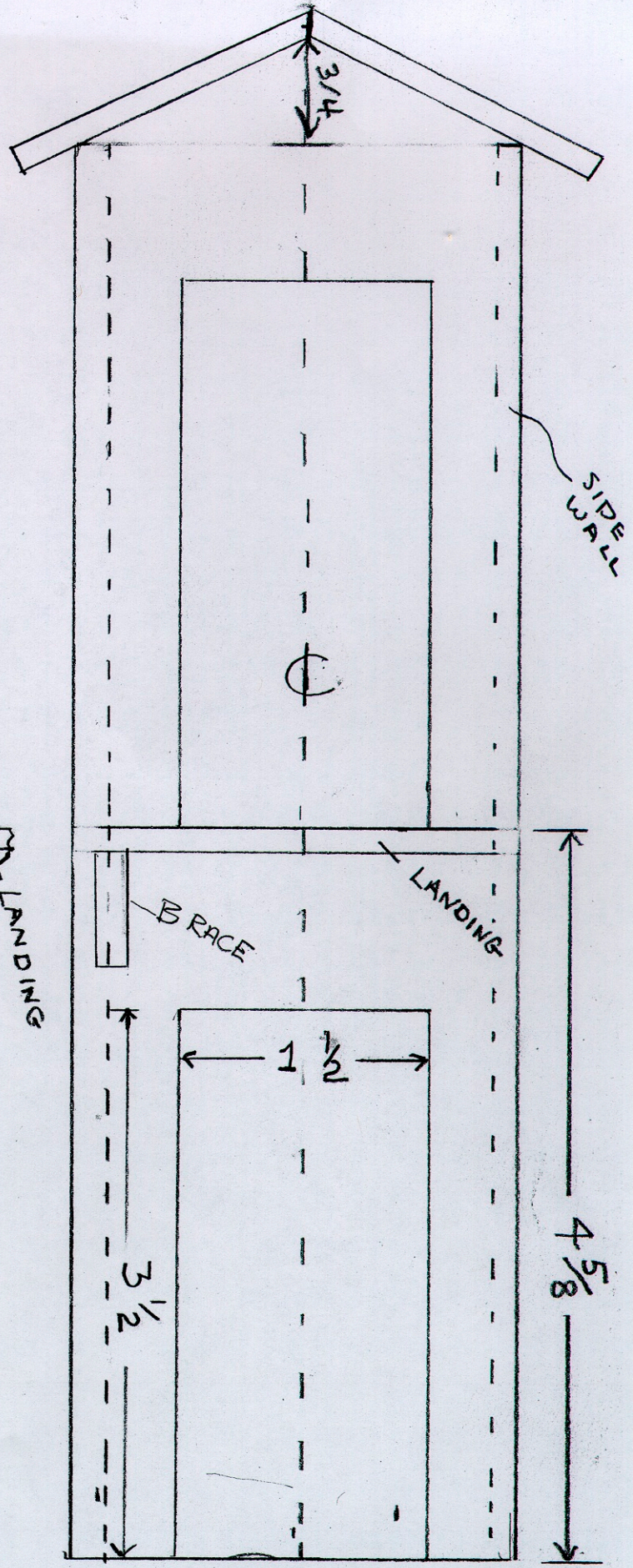


OUT HOUSE 2 STORY	
DATE 9-14-04	FULL SCALE
LSOL - JON DEKELES	



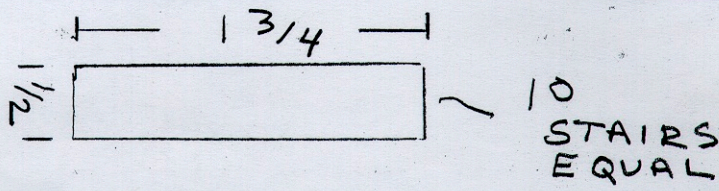
SIDES



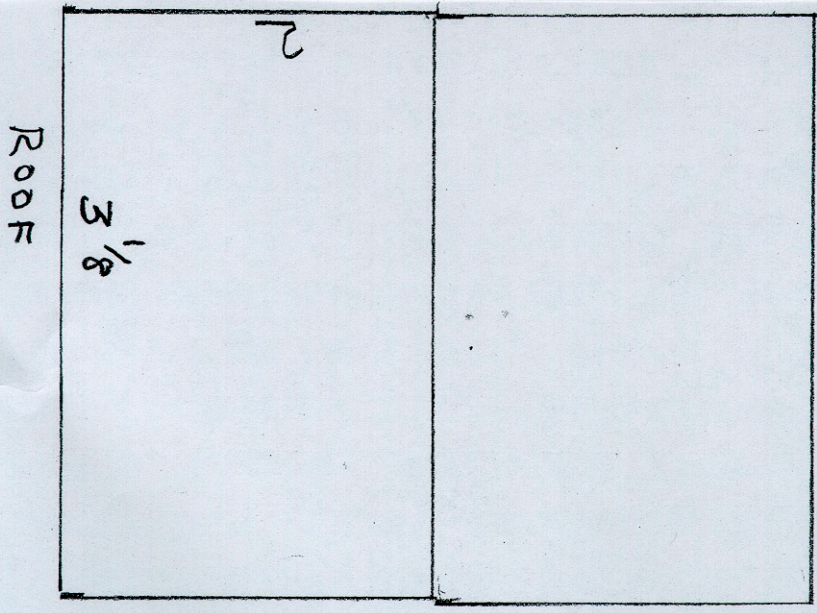
FRONT VIEW

*
NOTE
4 5/8 TO LANDING
CRITICAL
DOORS TYPICAL

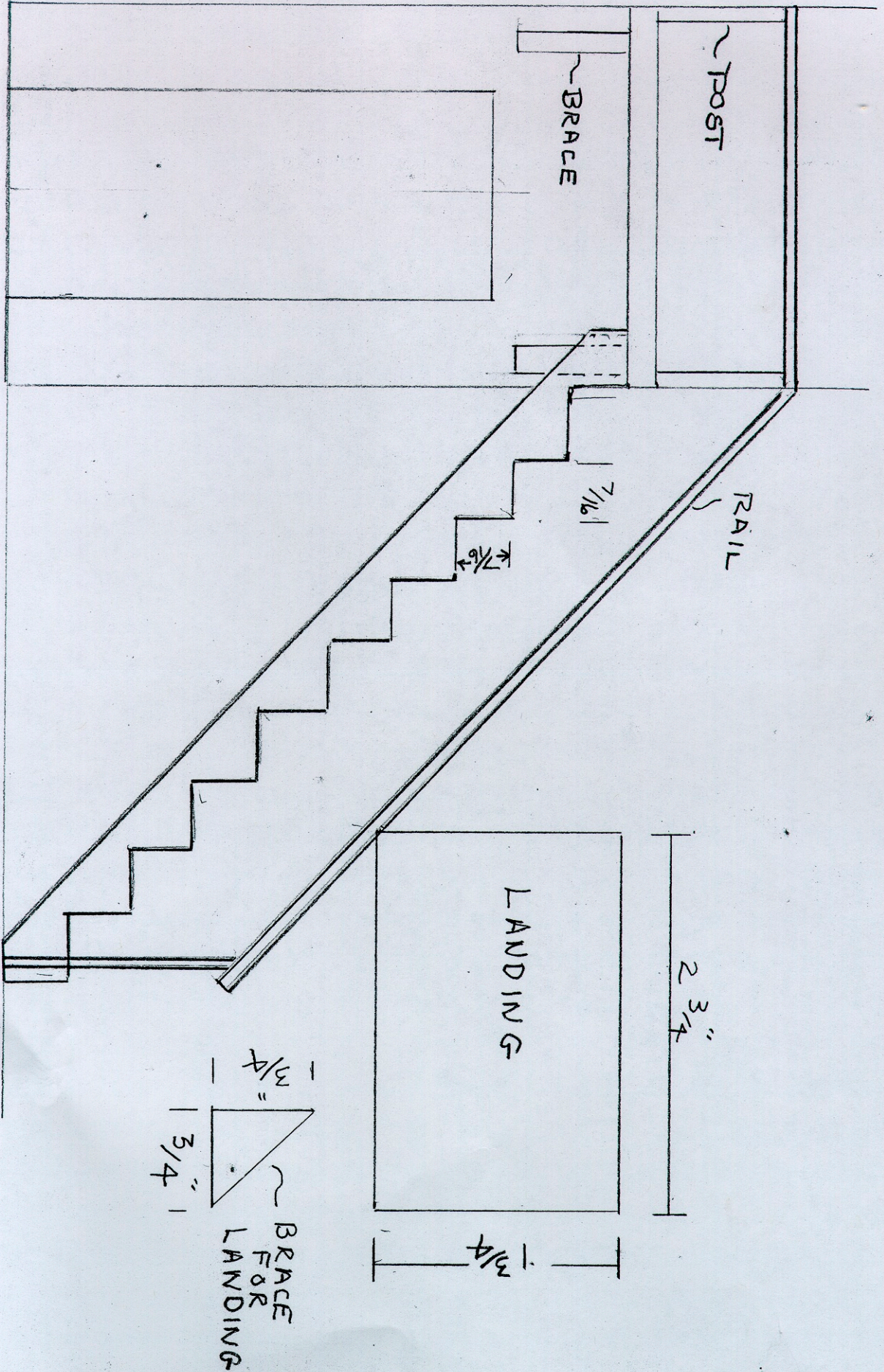
FLOOR	2 Pcs	2 3/8 X 2 3/8
FRONT	1 PC	9 3/4 X 2 3/4
BACK	1 PC	9 3/4 X 2 3/4
LANDING	1 PC	2 3/4 X 1 3/4
BRACE	2 PC	3/4 X 3/4
SIDES	2 PC	2 3/8 X 9
ROOF	2 PC	3 1/8 X 2
POST	3	1/6 X 3/16 X 1/4"
RAIL	1/8 X 1/4 X 13"	
BASE	1 PC	6 X 8"

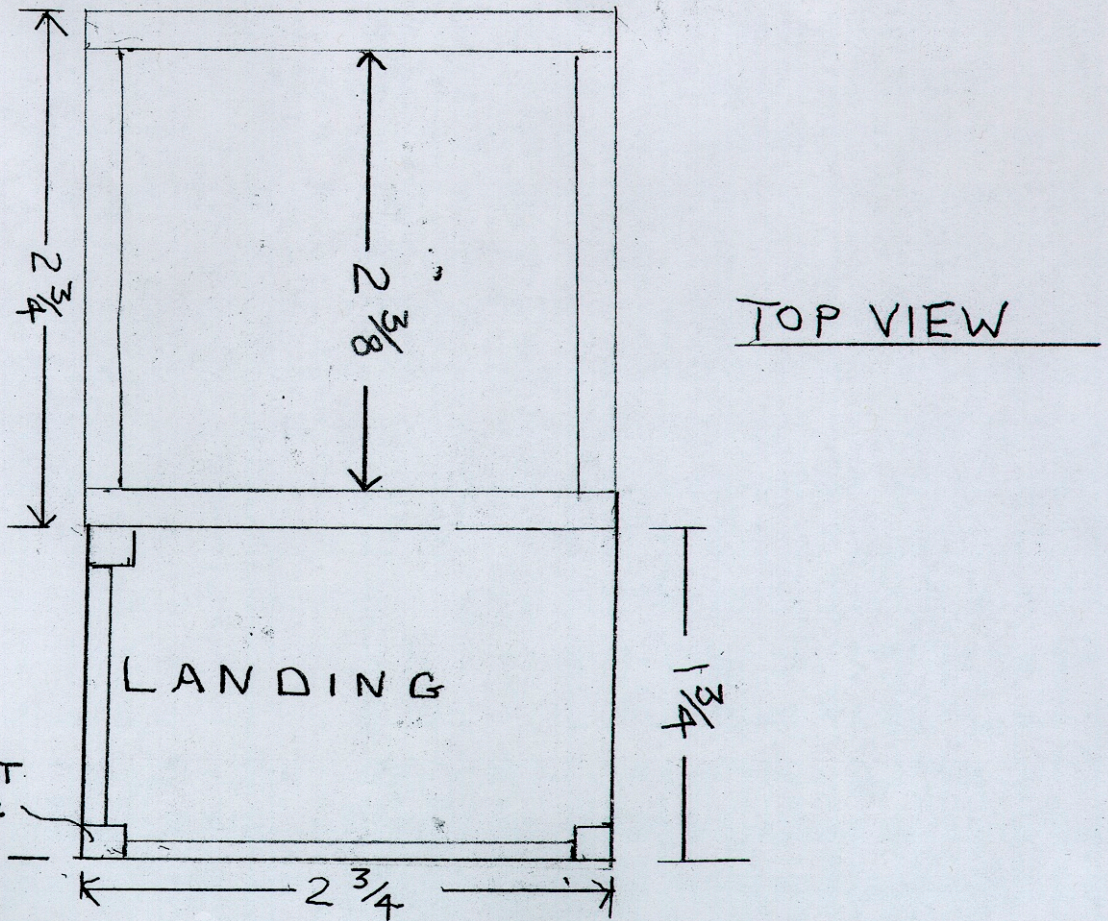
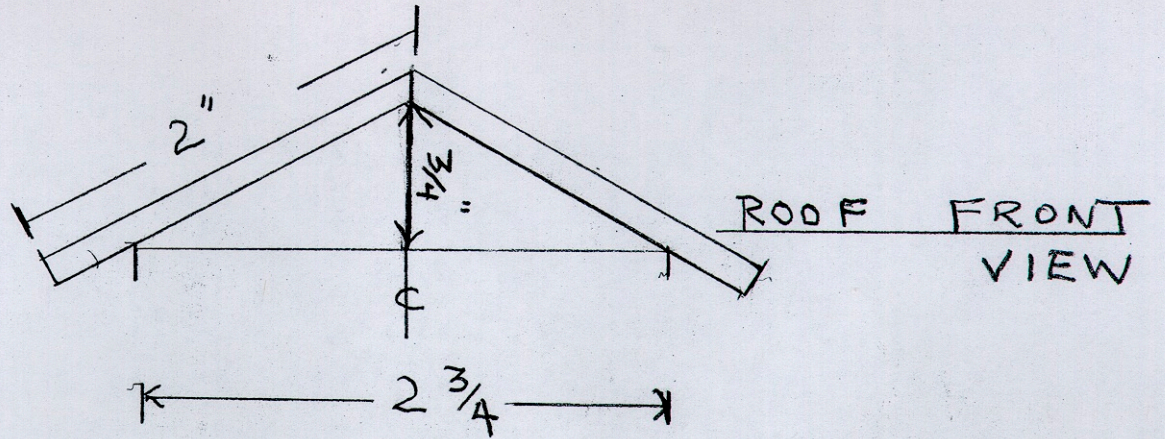


STAIR STRINGER FULL SCALE



POST FOR STAIR RAILS 3/4" x 3/4" - HAND RAILS SIZE BY BUILDER





PLYWOOD $\frac{3}{16}$ THICK

