



*Amy Gutschow*  
SHEBOYGAN COUNTY REAL ESTATE



[NEWS](#) | 
 [WEATHER](#) | 
 [SPORTS](#) | 
 [POLITICS](#) | 
 [CRIME](#) | 
 [BUSINESS](#) | 
 [EDUCATION](#) | 
 [ENTERTAINMENT](#) | 
 [COMMUNITY](#) | 
 [OBITUARIES](#)  
[BREAKING](#) | 
 [PHOTOS](#) | 
 [VIDEO](#) | 
 [CONTESTS](#) | 
 [TEXT ALERTS](#) | 
 [TRAFFIC](#) | 
 [EVENTS](#) | 
 [CLASSIFIEDS](#) | 
 [DEALS](#) | 
 [REAL ESTATE](#) | 
 [GAS PRICES](#)

## WATCH NOW: 2012 Sheboygan Holiday Parade presented by the Sheboygan

# Railroad Museum Open House set for December

Written by **SheboyganDaily.com Staff** on November 23, 2012.  
Under **Community**

**SHEBOYGAN** — The Sheboygan Railroad Museum will host an Open House on Saturday, December 1 and Sunday, December 2 from 10 AM to 4 PM each day.

Admission to the Open House is free but donations are welcome. The Museum is located at 1001 North 10th Street in Sheboygan.

Formally known as the Railroad Lodge, the building had its name changed two years ago to better reflect its use. “There was a common misconception over the years about what the building was being used for, mostly that it was a ‘Club’ or ‘Lodge,’” said **Leo Schneider**, president. “Correcting that has been a challenge, but we are making progress.”



The Sheboygan Society of Scale Model Railroad Engineers, Ltd, founded in 1977, which owns the building, has had, as its primary purpose, the preservation of railroad history, both prototype and models. To that end, it has amassed a large collection of railroad antiques, some dating back more than 100 years. A library containing thousands of books, periodicals, and videos have been categorized. They are available for research purposes.

The building received a complete facelift inside and out. The exterior is now painted in railroad colors, a theme also reflected in a brick paved walkway leading to the main entrance.

In addition to the large railroad artifacts on display, there are model railroads in six different scales in varying stages of completion, from the tiny Z scale to G scale. One of them, for example, replicates what a typical Lionel layout would have looked like in the mid 1950s, using vintage buildings and rolling stock acquired. Another is an HO scale layout, the largest of them, which will occupy two levels. It is operated completely by computer, using software especially programmed for it. The lower level is functional as work continues on the upper level.

“It has to be done in stages, as access to certain things depends on something else being completed first”, said **Dick Pool**, a Board member and layout committee lead. For the most part, the bulk of the layouts are custom built to fit the space, as opposed to a simple table top. Each has a particular theme in mind, and will show just how railroads serve in various areas of the country. “Having each in a different scale, we hope to attract a larger spectrum of the public”, said Pool.

One of the major considerations was aisle space for visitors. The original layout, while breathtaking to see, created a cramped feeling for large crowds who came to Open Houses. “We are aiming at a more open feeling with the new displays”, said Pool.

There will be an interactive area for small children to enjoy themselves along with a Brat Fry to satisfy those with an appetite. The members of the museum look forward to showing and teaching about the construction process.

Share this:



Like us on Facebook  
GET EXCLUSIVE NEWS, PHOTOS & MORE!

Today	Tuesday	Wednesday
Partly Cloudy 30°/14°	Partly Cloudy 34°/25°	Clear 34°/23°

Latest	Popular	Comments
<b>Burriss receives first NAC Player of the Week honor</b>		
<b>Kohler-Andrae State Park seeks volunteer hosts</b>		
<b>Silver Lake College to host “Christmas at Silver Lake” concerts</b>		
<b>2012 Sheboygan Holiday Parade</b>		
<b>High School Basketball results for 11/24</b>		

**Are You Hungry?**  
WE HAVE YOUR FOOD .COM  
Food is Just a Click Away  
(855) HUNGRY2 | Sheboygan, WI

*We've Got Your Style*  
**Casual Elegance Styling Salon**  
920-452-7001

**NOBODY DOES TACO PIZZA BETTER.**

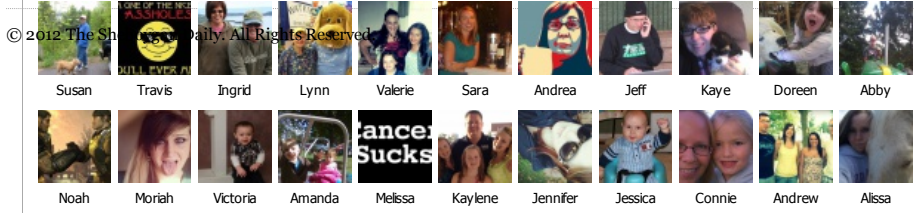
1114 Millersville Ave, Howards Grove  
 920-946-8699  
 www.CoreOneRealty.com

**Magic Wand**  
 "It Takes A Wizard To Perform Real Magic"  
 • Carpet & Upholstery Cleaning  
 • Ceramic Tile Cleaning  
 • Floor Refinishing  
 Commercial & Residential • 920-627-1892  
 Tray Whitson • 920-457-9472

\$40/month \$200/six months \$400/year

HOME 1,656 people like The Sheboygan Daily

↑ THE SHEBOYGAN DAILY



Log in - Powered by SheboyganDaily.com

**Put a little ART in your HOLIDAYS**

UNIQUE SHOPPING  
 DAZZLING DECORATIONS  
 GIFT MEMBERSHIPS

JOHN MICHAEL KOHLER ARTS CENTER

0 comments

0 Stars

Leave a message...

Discussion | Community | #

- ALSO ON THE SHEBOYGAN DAILY**
- Humane Society turns away after-school group** 32 comments
  - Black Friday shoppers flock to Sheboygan stores** 1 comment
  - Sheboygan man selected as grand prize winner of Lambeau Leap sweepstakes** 1 comment
  - Drive-through holiday lights show begins tonight** 1 comment
  - Kwik Trip opening alternative fuel location** 1 comment

- RECOMMENDED FOR YOU** [What's this?](#)
- Leading Like a CEO: Insights from Style for Hire's Cindy McLaughlin** Citi Women & Co.
  - Don't Spend \$1,899 for This IKEA Refrigerator: It's Not Worth It** Reviewed
  - Moving Up the Talent Value Chain, Taking Leadership by the Horns** KellyOCG
  - Workplace Bullying is a Real Problem; Here's How to Deal With It** Citi Women & Co.
  - Panasonic HC-V700 Camcorder Review** Reviewed