

[Click here to print](#)

MailOnline

All aboard the train home! Immaculate six-bedroom house complete with outdoor model railway is yours for £800,000

- Train firm executive Charles Howeson is selling his 'perfect' family home
- It features a 400ft working model railway, perfect for rail enthusiasts
- Also includes separate flat, landscaped garden, lake and an outdoor hot tub

By [Amanda Williams](#)

PUBLISHED: 07:44 EST, 28 February 2013 | **UPDATED:** 09:32 EST, 28 February 2013

It is surely the stuff of every little boy's dreams - a fully working 400ft outdoor model railway, right in the back garden.

Now, in news that will excite rail enthusiasts everywhere, this six bedroom property in Plymouth, Devon, has been put up for sale for just over £800,000.

After much deliberation, train firm executive Charles Howeson has decided to put his 'perfect' family home called Smallack Barn, on the market.



All aboard: Train firm executive Charles Howeson is selling his 'perfect' Plymouth family home - complete with 400ft model railway - in the open market



Chuffed: The impressive set is sure to bring out the little boy in all rail enthusiasts



Choo choo: In news that will excite rail enthusiasts everywhere, this six bedroom property in Plymouth, Devon, has been put up for sale for £800,000



Carefully created: The self-made millionaire and business leader - chairman of the First Great Western Trains advisory board - is a keen rail enthusiast and loving built the railway

He said it was time for him and his wife Emma to sell up as he battles a serious illness.

The home of the self-made millionaire and business leader - chairman of the First Great Western Trains advisory board - includes a drawing family and dining room along with a separate flat and a landscaped garden featuring a lake an outdoor hot tub and the model train set.

The house is laid out over six levels.

The site used to be a cluster of outhouses and barns which the Howesons converted into a large-scale family home 13 years ago.

Mr Howeson says they are moving on with a heavy heart.

He said: 'It is tremendously sad to have to say goodbye as we actually built this home ourselves,' he said.



Childhood dream: The site used to be a cluster of outhouses and barns which the Howesons converted into a large-scale family home 13 years ago, and soon installed the track



Idyllic: Mr Howeson said it was time for him and his wife Emma to sell up as he battles a serious illness

'It was just a series of barns before. You can only really have one perfect house in your life and this was it.

'It has given the whole family huge enjoyment for well over a decade.'

The former Royal Navy officer explained that he has been seriously ill, although he says he is 'winning' his battle.

Mr Howeson said his illness made him realise that now is the time for him and his wife to adopt a simpler life.

It has been put on the market with an asking price of £880,000.

Mr Howeson admitted that they are 'rattling about' in the huge home now their children have moved away.

He and his wife have already purchased a smaller property on a former hospital site in the Stonehouse area of Plymouth for them to relocate to once the sale is complete.

He said: 'We're downscaling to a house one-fifth of the size so it is quite a challenge selecting what we want to take with us. I certainly won't be able to take my model ship collection with me.

'It will be a different sort of life. We love living in Plymouth but we have always felt like we live in the country here - we look out onto a valley from our terrace but at the same time we're just a short way from the city centre.'



Bespoke: The home includes a drawing family and dining room along with a separate flat and a landscaped garden featuring a lake, and an outdoor hot tub



Spacious: Mr Howeson admitted that they are 'rattling about' in the huge home now their children have moved away

In 1991, after 25 years in the Navy, Mr Howeson began to get involved with various business and community ventures, including healthcare, banking, water and the railway.

He is currently the chairman of the First Great Western Trains advisory board and of the Plymouth Area Business Council, as well as the president of the charity he founded, The Plymouth Drake Foundation.

But he admits that his illness has forced him to slow down.

'I have reduced my work a little,' said the father of three.

'Although I do not think you should just give everything up when you are ill. That's the wrong attitude to take.'

The Howeson children have now all flown the nest with the youngest Tavoya, 20, studying in Oxford while Pippa, 30, and Robin, 29, are both making a living in London.

'They are saddened that we're moving but they are realistic and fully understand the reason we're selling,' said Mr Howeson.

'We know that we have been incredibly lucky to live here but now we require a simpler way of life.'

MOST READ NEWS

- [Previous](#)
- [1](#)
- [2](#)
- [3](#)
- [Next](#)



• [Prayers for Louisville player after horrific injury in front...](#)



• [Police hunt for kidnappers as couple are snatched at...](#)



• [Was this the world's first mobile phone? 1938 film shows...](#)



• [Google celebrates leftist leader Cesar Chavez, not Easter,...](#)



• [The most dangerous place on earth? San Pedro Sula in...](#)



• [The celebrities fighting to stop their homes being swept...](#)



• ['Don't worry about me, go out and win this thing': Heroic...](#)



• [Hidden in caves 600ft below ground, carved into volcanic...](#)



• [Family's anguish as they're forced to watch their home burn...](#)



• ['Patients galore, all ripped apart and mangled': 'Bad...](#)



• [The ultimate Easter bunny: Heavyweight Ralph weighs 3st 8lbs...](#)



• [Full of the joys of spring! First Family take a spring walk...](#)

VIDEOS YOU MAY LIKE

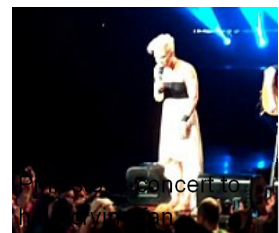
by **Taboola**



Tiger Woods girlfriend's Sharon



DJ A\$TROP, Nicki Minaj threatens to



concert to



Thursday's A.M. Hot MINOR LEAGUE GUY

Comments (23)

- [Newest](#)
- [Oldest](#)
- [Best rated](#)
- [Worst rated](#)

[View all](#)

When I were a lad in the 1960s, we had a family friend who had a model railway that started in the garage, ran through a "cat flap" and then all round the garden and back again. It was at 33 High Oak Road, Ware, as I recall...

- [UKipper](#) , SodEU, United Kingdom, 01/3/2013 21:02

Click to rate _ _ Rating 3

[Report abuse](#)

Looks like a comfortable, real, home - not like those weird houses owned by the lower classes: ie footballers, pretend actresses etc.

- [ann b](#) , paris, 01/3/2013 15:04

Click to rate Rating 13

[Report abuse](#)

I hope he gets well soon. Too bad he's giving up such a great house and railway. I'd like to build one too.

- [Scotty](#) , Canada, 28/2/2013 23:53

Click to rate Rating 45

[Report abuse](#)

Get well soon, Sir.

- [Naomi](#) , Ireland, Ireland, 28/2/2013 22:46

Click to rate Rating 67

[Report abuse](#)

Fantastic - I'd love to have something like that in my garden.

- [This Is My Name](#) , I Live Here, 28/2/2013 22:28

Click to rate Rating 37

[Report abuse](#)

Wow - look at it! Pond for model boats, lawn for R/C helicopters and a cracking model railway. I could be 11 all over again (some say I am anyway!) My sympathies to Mr Howeson for that illness though.

- [Fish](#) , Citizen of Legoland, United Kingdom, 28/2/2013 20:13

Click to rate Rating 99

[Report abuse](#)

Very cheap indeed. Is it on a cliff?

- [Simno Templar](#) , London, United Kingdom, 28/2/2013 20:10

Click to rate Rating 54

[Report abuse](#)

It is a lot for the money, but if you look at what your money gets you now as opposed to several yrs ago it's a lot more in property. Things cannot be good out there.

- [UKIP voter](#) , LibLabCon All the Same, United Kingdom, 28/2/2013 19:43

Click to rate Rating 20

[Report abuse](#)

its mine, please.

- [cante](#) , london, Algeria, 28/2/2013 18:43

Click to rate Rating 37

[Report abuse](#)

Hope my hubby does not see this lol he has always wanted a running railway in the garden! *sighs*

- [SP](#) , Surrey, United Kingdom, 28/2/2013 18:31

Click to rate __ Rating 46

[Report abuse](#)

The views expressed in the contents above are those of our users and do not necessarily reflect the views of MailOnline.

Find this story at www.dailymail.co.uk/news/article-2285842/All-aboard-train-home-Immaculate-bedroom-house-complete-outdoor-model-railway-800-000.html

Published by Associated Newspapers Ltd

Part of the Daily Mail, The Mail on Sunday & Metro Media Group

GlamEntertainment

© [Associated Newspapers Ltd](#)