



# ***THE ARISTO-CRAFT "INSIDER"***



***VOLUME 17 ISSUE 1***

***JANUARY/FEBRUARY 2009***



***2009: Year of the Revolution***



## ***ARISTO-CRAFT LOOKS TO THE WEB FOR ITS 2009 CATALOG!***

There is a new kind of online catalog showing up on the web called a “Flip Catalog”, where you can turn the pages on your computer screen as if the catalog was in hand. You can move via an index to the section you want, and of course you can print or e-mail any page. The catalog is in four colors and most computers have a full-screen option in the view tab for better reading. There is a magnifying option for the pages and therefore size can be adjusted to accommodate each reader’s vision capabilities.

The catalog will be updated during the year, and each New Year will start fresh based on the latest information in last year’s version.

Why did we do this? Well, we’re not killing as many trees this way, nor do we have to pay vastly growing postage rates to get our customers the information they need. It’s our belief that computer usage is now almost universal and thus the greatest proportion of our users can get access to the catalog at no cost.

You can see our catalog from the tab called “Aristo-Craft Catalog” at our web page located at [www.aristocraft.com/catalog](http://www.aristocraft.com/catalog).

Please e-mail us at [aristo@mindspring.com](mailto:aristo@mindspring.com) about any difficulty you may have reaching the online catalog for 2009. The initial catalog that will appear on the web page will be based on the 2008 version. Over the next few months it will be updated as new information is added.



# ***2009: Year of the Revolution***

*by David Bodnar*

For the last two years I have had the privilege of working with Lewis Polk and the staff at Aristo-Craft as the Train Engineer Revolution went from a rough draft of an idea to a finished product. I received one of the first sample units in late November and have been putting it through its paces as I worked on the instruction manual that will guide users as they set up and use this extraordinary device.

In this article I would like to give you a detailed look at the Train Engineer Revolution and show you, step-by-step, the process you will need to follow to get your first "Revolution Locomotive" running!

## **Features**

From the beginning the new Train Engineer was designed to be easy to operate so that model railroaders would be able to concentrate more on running trains and less on the complexity of the control mechanism. To this end the display presents setup and control items in plain English. After initial setup and a brief introduction to the transmitter and receiver little time should need to be spent with the printed manual.

The highlights of the new Train Engineer clearly differentiate it from its predecessor and other remote control systems:

- The 2.4 gigahertz radio system is bidirectional. That means that the transmitter not only sends commands to the locomotive but it also gets feedback from the receiver in the locomotive. Spread spectrum radio transmission provides immunity from other radio sources that are in the same frequency range.
- Outdoor range exceeds 400 feet.
- Locomotives are identified by name and

*(Continued on page 4)*



(Continued from page 3)

road number such as PACIFIC 5305 or MIKADO 3185.

- Information about the locomotive that is being operated is clearly displayed on a back-lit, graphical LCD display.
- Each transmitter can hold information on as many as 50 different locomotives.
- Multiple transmitters can independently operate additional groups of 50 locomotives without

interfering with one another.

- Power can come from on-board batteries or track power
- The receiver can supply 5 amps of power while accommodating peak loads that can go to 8 amps.
- Most transmitter control operations can be done with one hand.
- Textual information is keyed into the transmitter using the same technique that is used on

cell phones.

- Six auxiliary outputs on the receiver can be used to operate sounds, smoke units or lighting.
- Each locomotive can have individualized setting that include start speed, maximum speed and momentum.

### Receiver Installation

If you are using one of the newer

(Continued on page 5)

## Transmitter Control Overview



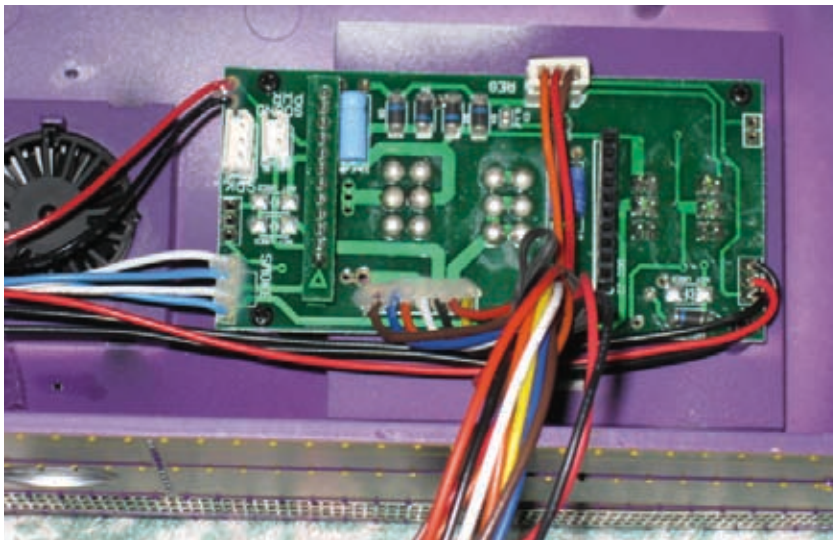
*The Revolution Transmitter*

- **Screen** – The high resolution / backlit graphic screen is used to display information and to provide operation assistance.
- **Power on/off** - press “ON/OFF” to turn the unit on. Press and hold the “ON/OFF” button for 2 seconds to turn the unit off.
- **<<T / T>>** - Used to select the active locomotive. Press the <<T key to scroll left through the list of locomotive names and the T>> key to scroll right. The locomotive names and road numbers will be displayed at the top of the screen.
- **Arrows** – When operating a locomotive the up and down arrows increase or decrease speed and the left and right arrows select direction. When accessing menu items the up and down arrows scroll between items and the left and right arrows change that item's value.
- **STOP/ENTER** – When operating a locomotive the STOP/ENTER button stops the active locomotive and sets its speed to zero. When accessing menus STOP/ENTER is used to confirm a selection
- **Menu** – From the Operating screen selects the unit's setup menu. When accessing menus pressing MENU will move you back one menu level like an Escape or Back key.
- **Number / letter keys** – When entering textual or numeric information the use of these keys is identical to those on a cell phone. If you are unfamiliar with their use please see Appendix “A” for instructions.
- **Number keys 1-6** - When operating a locomotive, keys 1 through 6 are used to access six auxiliary functions that may have been programmed into your engine's controller. For example, pressing key “1” might activate the sound card's whistle and “2” its bell sound while “3” might turn the smoke unit on or off.
- **Number key #** - When the Operating screen is being displayed pressing the # key accesses the Quick Menu List.
- **Number key 0 / all stop** - When the Operating screen is being displayed pressing the 0 key for 2 seconds will stop all locomotives and set their speed to zero. To restart locomotives press the <<T or T>> keys to select a locomotive and press the up arrow.

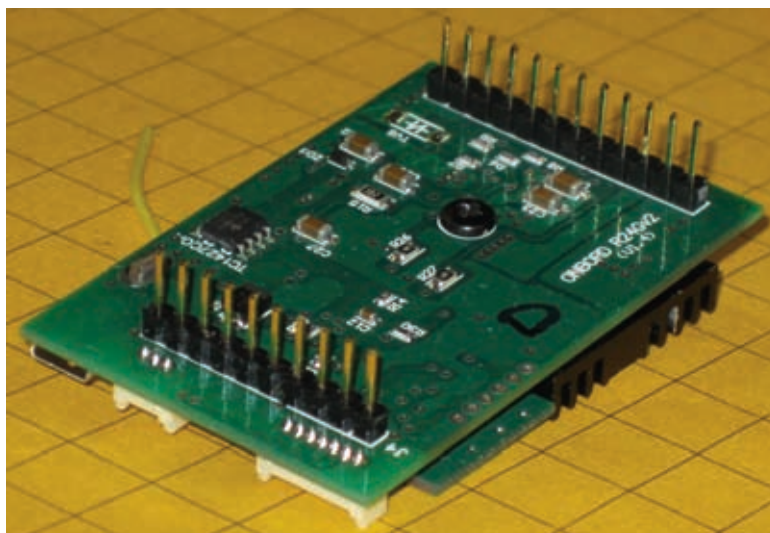




**(fig. 3 - Inside of E8 locomotive)**



**(fig. 4 - Revolution receiver inside loco)**



**(fig. 5 - Revolution receiver)**

*(Continued from page 4)*

Aristo-Craft locomotives that has a “Plug & Play” port, installation of the receiver should only take a few minutes. Installation in other locomotives takes a bit more time but is no more difficult than the installation of other locomotive controllers.

I installed the receiver in a new Aristo-Craft E8 in less than 15 minutes. Here is what is involved.

First remove the body from the locomotive’s frame. The screws that need to be removed are clearly marked with arrows. Separate the body shell from the frame, laying the top of the locomotive on a towel or other padded surface. The top of this photo shows the body of locomotive which contains two smoke units, a high quality speaker and the electronic circuit board (see fig. 3). The frame is at the bottom.

Here is a close-up photo (see fig. 4) of the electronic control circuit board as it comes from the factory. Note that there is an open 10 pin connector on the right. There is a similar 12 pin connector on the left that has a factory installed plug in it. The plug can be identified by the small triangle at one end.

In this photo of the Revolution receiver (see fig. 5) you can see the two headers, one 10 pin and one 12 pin, that will plug into the locomotive’s circuit board.

To install the receiver (see fig. 6) just pull out the plug that is factory installed in the 12 pin connector. Next plug the Revolution receiver’s headers into both the 12 and 10 pin

*(Continued on page 6)*



*(Continued from page 5)*

connectors being careful that the pins are properly aligned and fully inserted into the locomotive's control board.

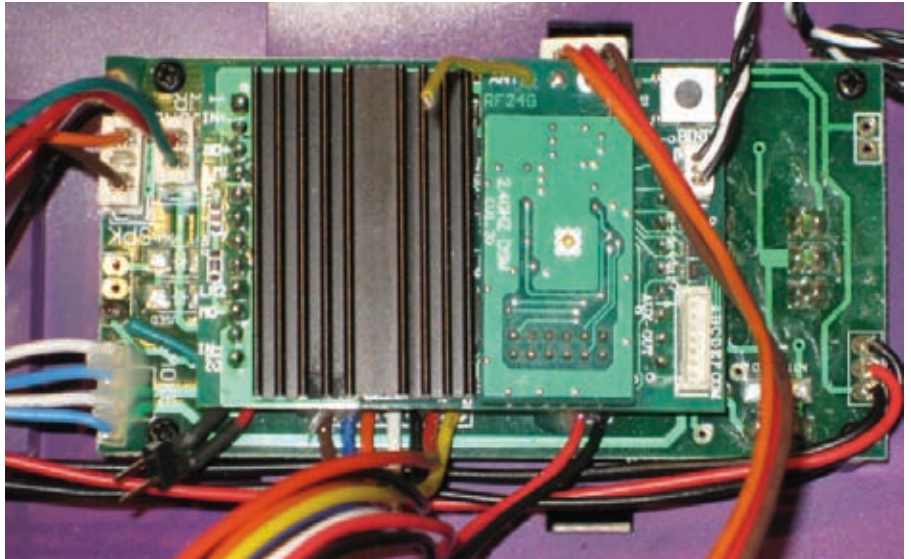
If you have difficulty getting the board into place because of the three wires that go to the plug labeled "REG" you can pull the cable out, insert the board and put the cable back in place.

The last step in the installation is to install the "Bind" switch in a location where it can be reached once the locomotive is reassembled (See fig. 7). The "Bind" switch is used to link the receiver and transmitter. Because the locomotive that is being used here has opening doors on the sides and rear I opted to glue the switch just inside one of the doors so that it would be hidden but could be accessed when needed. You could also mount it to the bottom of the locomotive by drilling a hole in the base or in the compartment on top of the locomotive where the smoke, light and motor switches are located.

Here you see the "Bind" switch attached behind the rear door with hot melt glue (See fig. 8). The other end of the switch cable goes to the socket on the receiver labeled "BIND". It is easy to depress the switch by reaching through the rear door.

In this locomotive it is not even necessary to install the bind switch if you have long fingers (see fig. 9). As you can see in this photo of the completed installation (see fig. 10) there is another bind switch (circled in yellow) on the receiver circuit board that you may just be able to reach from the rear door!

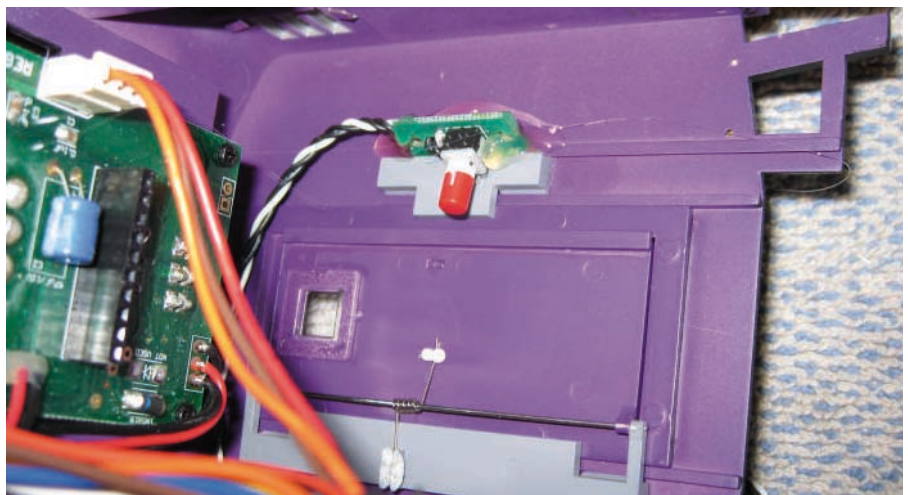
*(Continued on page 7)*



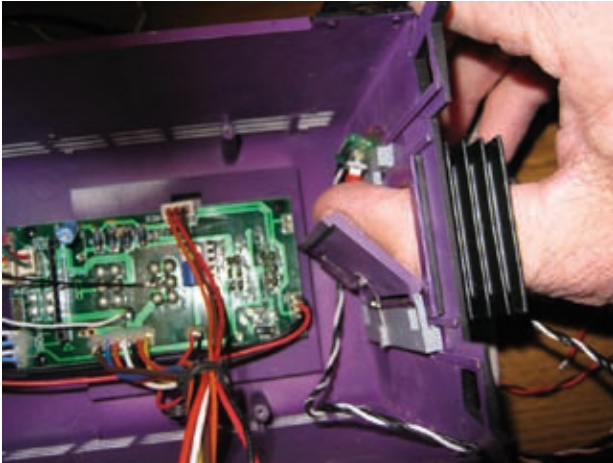
**(fig. 6 - Install the bind switch in a reachable location)**



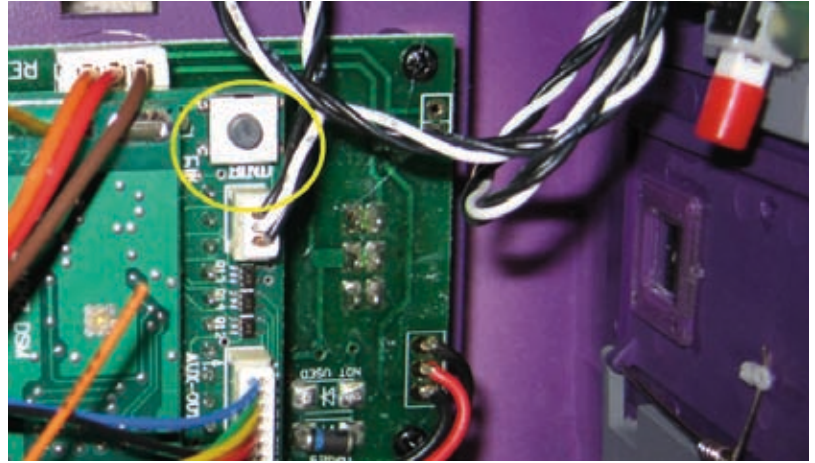
**(fig. 7 - Close-up of the bind switch)**



**(fig. 8 - Bind switch secured near loco door)**



(fig. 9 - Easy access to the bind switch)



(fig. 10- Bind switch on the circuit board)

(Continued from page 6)

If you are not installing a sound board or the smoke unit control board just put the locomotive back together and your installation is complete!

### Locomotive Configuration

Each locomotive must be set up and introduced to the transmitter before it can be operated. Although there are a number of configuration settings that can be made only a few are necessary to get your train running.

Turn on the transmitter by pressing the ON/OFF button. The main control screen will be displayed and will look something like this. (see fig. 11)

Press the MENU key once and you will see the main menu screen (see fig. 12)

Press the STOP/ENTER key to select 1. TRACK/LOCO ASSIGN. Note that the key on the transmitter that is currently labeled STOP will be relabeled STOP/ENTER in the near future.

First you must select a bind address (see fig. 13). The bind address is normally different for each locomotive and is a number from "00" to "49". (Note: if multiple locomotives are used to pull one train in a consist each locomotive will have the same bind address). Use the RIGHT ARROW or LEFT ARROW keys to select a bind address. For this installation let's just use the first address, 00.

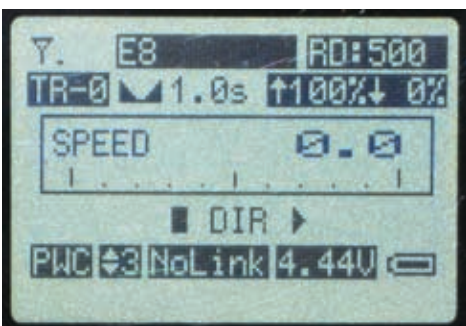
Press the DOWN ARROW to move to item c. NAME. Use the keypad to type letters or numbers to name the engine. Names may be up to 9

characters long. For example, GP40, EGGLINER or MIKADO. Text entry is done using the exact same method that is used on cell phones. A detailed explanation of this is included in the operation manual. Fortunately most of us already know how to do cell phone text entry and won't need to consult it!

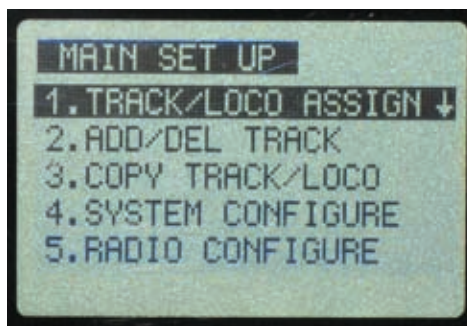
Once the name has been entered move down one more item to d. ROAD NO. The road number can be up to 4 characters long and may contain letters and symbols.

Even though the bind address, name and road number are all that are needed right now there are five optional settings that are worth mentioning: (see fig. 14)

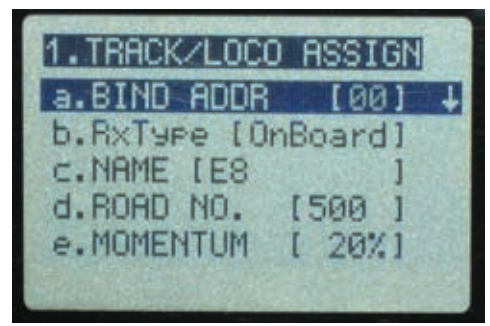
(Continued on page 8)



(fig. 11)

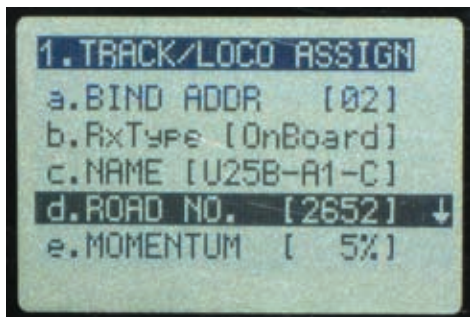


(fig. 12)



(fig. 13)





(fig. 14)

(Continued from page 6)

- e. MOMENTUM - sets the locomotive's momentum, the rate at which it accelerates. The higher the momentum value the slower the locomotive will speed up when you press the UP ARROW for acceleration.
- f. DELAY - sets the number of seconds that the locomotive will be completely stopped when its direction of travel is changed. For example, if delay is set to 3 seconds and you change the locomotive's direction it will decelerate to a stop and pause for 3 seconds before reversing and accelerating to the set speed.
- j. TOP SPEED - sets the locomotives top speed as a percentage of its possible top speed. This comes in handy if you have visitors who are operating your trains and have been known to run them at too high a speed. If you set this to 70% that is all the faster the locomotive will go, 70% of its possible top speed.
- k. START SPEED - sets the speed at which acceleration of the locomotive begins. If you have a large locomotive or one that is pulling a long, heavy train you can set the start speed so that the power level will jump to the set percentage as soon as you begin accelerat-

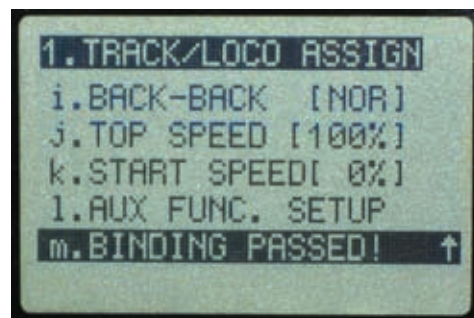
ing. For example, if you have a locomotive that doesn't start moving till the throttle setting is at 25% you can set the start speed to that number and not have to wait for the speed to get to that level before the train moves. As soon as you press the UP ARROW the speed will jump to 25%.

- l. AUX FUNCTION SETUP - sets the function keys to be either latching or momentary. To operate a smoke unit set the function key to latching so that the smoke unit goes on and stays on when you press the function key. Set a horn control function key to momentary so that the horn only sounds once when you press the key.

### Binding the Locomotive and Transmitter

The final step is to bind the transmitter and the receiver that was installed in the locomotive. This process establishes the link between the two and associates the settings we just made with a particular locomotive. To bind them follow these steps:

1. If you are running on batteries make sure the locomotive's battery is fully charged.
2. If your locomotive uses track power turn on the power to the track that the locomotive is on. The voltage should be set to its maximum, but no more than 24 volts.
3. Press and hold the BIND button on the locomotive that was just configured.
4. Release the BIND button when the red LED on the receiver board and the locomotive's lights begin flashing.



(fig. 15)

5. While the lights are flashing select menu item m. BINDING and press the STOP/ENTER button.
6. In a moment the screen will show that the programming of the unit has been successful and the flashing will stop. (See fig. 15)

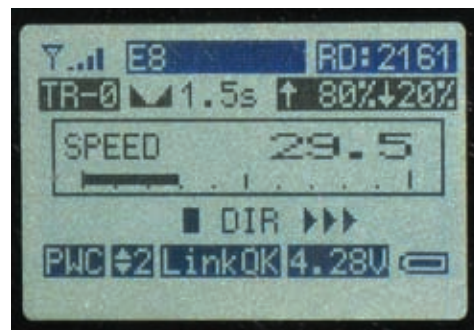
### Operating the Locomotive

Once binding is completed press the MENU key twice to return to the main operating screen. Confirm that the locomotive name and number that we just configured is displayed. Use the UP ARROW and DOWN ARROW keys to increase and decrease the locomotive's speed. The RIGHT ARROW and LEFT ARROW keys change the locomotive's direction.

### Control Screen Overview

At this point a quick overview of the main control screen is in order (see fig. 16).

(Continued on page 9)



(fig. 16)



(Continued from page 8)

- The antenna symbol in the upper left shows the strength of the radio signal between the transmitter and the locomotive's receiver.
- The next two items on the top line are the active locomotive's name and road number
- The first item in line two is the number of the active locomotive. Note that this number shows the locomotive's position in the transmitter's memory and may change for a particular locomotive if locomotives are added or deleted. The first locomotive is shown as TR-0, not TR-1.
- The next number is the number of seconds that the train will stay stopped when its direction is changed.
- The next two numbers are the locomotive's maximum speed and start speed. Both are expressed as a percentage of the maximum possible speed.
- The box in the center of the display shows the locomotive's current speed. At the bottom of this box the speed of the locomotive is shown graphically.
- The next line shows the direction of travel for the active locomotive.
- The first item on the bottom line shows that the system is using PWC (Pulse Width Modulation) speed control.
- The second item on the bottom line is the speed mode. This is a sensitivity level for speed of reaction after pressing the buttons that increase or decrease the locomotive's speed. For switching you might want a lower sensitivity and for big trains a faster key

reaction. This item can be modified by accessing the Quick Menu List, which is described later in this article.

- LinkOK or NOLink tells whether the transmitter and receiver of the active locomotive are communicating.
- The next item is the voltage level of the transmitter's batteries. Fresh alkaline batteries should show about 4.5 volts. The last item is a graphic of the transmitter's battery level.

### Adding a Second Engine

To introduce another engine to the controller follow these steps:

1. Press the MENU key to return to the main menu
2. Select 1. TRACK/LOCO ASSIGN
3. Select a bind address as we did before. This bind address should be different than the one we used with the first engine.
4. Enter a name and road number for the engine.
5. Change any other settings that you want
6. Turn on the power to the new locomotive and press its bind button
7. While the lights are flashing select menu item m. BINDING and press the STOP/ENTER button.
8. Wait for the programming confirmation message.
9. Press the MENU key once to return to the main menu.
10. Select 2. ADD/DEL TRACK
11. Use the UP ARROW and DOWN ARROW keys to select the locomotive that we just identified.
12. Use the LEFT ARROW and

RIGHT ARROW keys to select ADD and press STOP/ENTER. This will add the second locomotive to the list of active locomotives that will be displayed when you press the <<T and T>> keys from the main control screen.

### Controlling More than One Engine at a Time

Make sure that both engines have been identified in the transmitter and that binding has been successful. Place both engines on the same track, with one of them some distance ahead of the other. Use the <<T and T>> keys until the display shows the name and road number for the engine that is in front. Use the UP ARROW key to start it running slowly in a forward direction. Select the other engine with the <<T and T>> keys. Use the UP ARROW and DOWN ARROW keys to get it running at the same speed and in the same direction. Note that the displayed speed for both engines may not be the same when they are actually running at the same speed as it can vary from locomotive to locomotive.

### Multiple Locomotive Consists

Multiple locomotives pulling the same train can easily be accommodated. To set up a consist of two locomotives follow these steps:

1. Configure one locomotive using the procedure outlined above.
2. Bind the first locomotive and the transmitter
3. Configure the second locomotive using the same bind address as the first one.
4. If the second locomotive will be

(Continued on page 10)

(Continued from page 9)

running backwards change the BACK-BACK setting from NOR to REV.

5. Bind the second locomotive and the transmitter
6. Press the MENU key once to return to the main menu.
7. Select 2. ADD/DEL TRACK
8. Use the UP ARROW and DOWN ARROW keys to select the locomotive that we just identified.
9. Use the LEFT ARROW and RIGHT ARROW keys to select ADD and press STOP/ENTER.
10. Press MENU to return to the main control screen.
11. Place both locomotives on the track a few feet apart
12. Select the locomotive with the <<T and T>> keys.
13. Speed up the locomotive and confirm that both are going in the same direction
14. Couple the locomotives and you are ready to go!

Note that the transmitter treats the locomotives in the consist as one locomotive. You cannot give them different names or road numbers.

### **Other Menu Options - 2. ADD/DEL TRACK**

The Train Engineer Revolution transmitter can store information on as many as 50 locomotives. Since it is unlikely that we would have this number of locomotives active at one time we can use this menu item to limit the number of locomotives that show up when we press the <<T and T>> keys while viewing the control screen. Use the UP ARROW and DOWN ARROW to display locomotive names and the RIGHT ARROW

and LEFT ARROW to add or delete a locomotive from the active list. Press STOP/ENTER to confirm adding or deleting.

### **Other Menu Options - 3. COPY TRACK LOCO**

Once you set up a locomotive with a set of options you can copy that locomotive's characteristics to another locomotive based on its bind address. For example, if you have set up bind address 00 and want to copy it to bind address 01 just select 00 as the FROM: and 01 as the TO: and move to COPY and press STOP/ENTER. All of the data information from the first locomotive will be copied to the second.

### **Other Menu Options - 4. SYSTEM CONFIGURE**

a. POWER OFF - sets the number of minutes that the transmitter will stay on if no buttons are pressed. This can range from 1 to 30 minutes. Note that the trains will continue to run even if the transmitter shuts itself off and that the transmitter remembers all of its settings when it is turned back on again.

b. BRIGHTNESS - sets the backlight brightness. Lower brightness levels prolong battery life.

c. CONTRAST - adjusts the LCD contrast level.

d. KEY SOUND - selects if the beep that is heard whenever a key is pressed is on or off

### **Other Menu Options - 5. RADIO CONFIGURE**

a. RF-CHANNEL (12-26) - this can

be changed if you suspect that interference from a local source is affecting the range of the system.

b. GROUP ID (0-9999) - If you have more than 50 locomotives that you want to control or you have multiple areas that you want to control with individual transmitters, you can select a different Group ID for each transmitter and they will operate independently of one-another. It is also important that visitors who might bring their own Train Engineer Revolution and locomotives have a different group ID.

### **Other Menu Options - 6. QUICK RF BINDING**

This item is the same as the BIND option in the TRACK/LOCO ASSIGN menu.

### **Other Menu Options - 7. MY MEMO**

Allows you to enter your name and other identification information into the transmitter.

### **Other Menu Options - 8. RESET MEMORY**

This option resets the transmitter's memory to its factory settings.

### **Quick Menu List Options**

This supplementary menu is accessed by pressing the "#" key while viewing the main control screen.

AUX FUNCTIONS - shows the auxiliary output setting for the currently selected locomotive. The current state is shown (on or off) and its setting, momentary or latching.

(Continued on page 11)



(Continued from page 10)

**STEP SPEED** - this item can be set to a value from 1 to 5. When set to a lower number the rate at which the speed increases when you hold the UP ARROW will be at its slowest. A higher number will cause this rate to increase. When set to its highest value the speed can change from 0 to 100% very rapidly.

**A-Z NAME SEARCH** - displays an alphabetized list of the locomotives that have been entered into the transmitter. This provides a quick way to find a locomotive in a long list.

**ABOUT SYSTEM** - shows the version of the internal software

While we are on the topic of version numbers, Aristo-Craft plans on doing transmitter version updates for a cost of \$18.00 which includes return postage and handling. The reprogramming of the transmitter will not overwrite all of the data you may have entered, just the underlying software.

## Special Features

The Train Engineer Revolution can control more than just your locomotive's motor and lights. There is a small circuit board that is included with the package that can be used to turn smoke units on and off. There are also six auxiliary outputs on the receiver that can be used to control sounds and other installed devices that you may have.

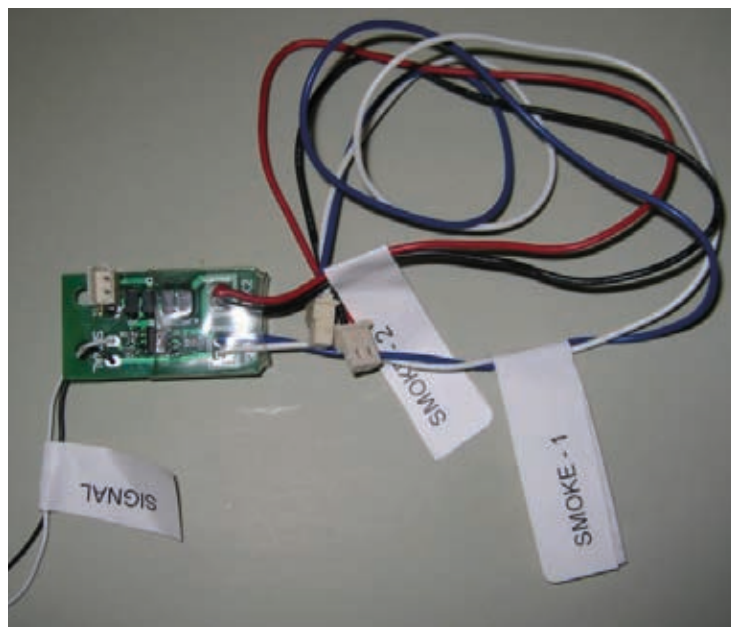
## Smoke Unit Control Board Installation

The Revolution receiver cannot operate the locomotive's two smoke units

directly. Because of the current draw of the smoke units a small controller board must be installed between the receiver and the smoke units.

This photograph of the smoke control board shows the signal wires, which are connected to the Revolution receiver, and the two smoke unit wires, labeled SMOKE-1 and SMOKE-2, that connect directly to the smoke units. Note that the control board can accommodate one or two smoke units. Only use this control board with smoke units like the ones shown in the photographs.

3. plug the smoke plugs, labeled SMOKE-1 and SMOKE-2, from the control board into the smoke units
  4. connect the black signal wire to the black wire, the common terminal, from the receiver's auxiliary plug,
  5. connect the white signal wire to one of the six colored wires that are on the receiver's auxiliary plug.
- note:** The Auxiliary plug has contacts that are labeled "a", "b", "c", "d", "e", "f" and "com". Button 1



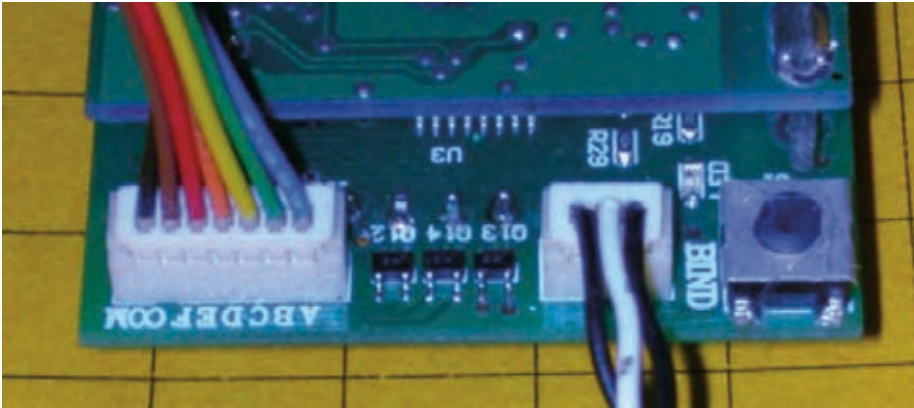
(fig. 17 - Close-up of board with two smoke unit connectors)

The steps below show how to install the board with two smoke units (see fig. 17). The procedure for a locomotive with only one smoke unit is the same, you just don't use the second smoke connector, SMOKE-2.

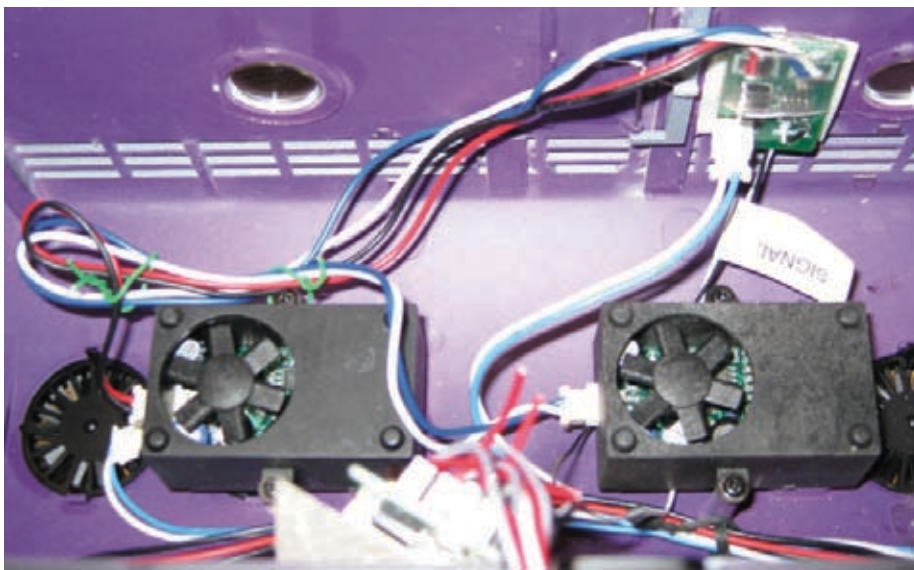
1. unplug the power cables from the smoke units
2. plug the cable that you just removed from either of the smoke

on the transmitter controls contact "a", button 2 controls "b" and so on through button 6 controlling "f". The wire that you use to control the smoke unit is arbitrary. I selected "f", the brown wire, and reserved "a" and "b", the blue and green wires, for the horn and the bell on the sound card.

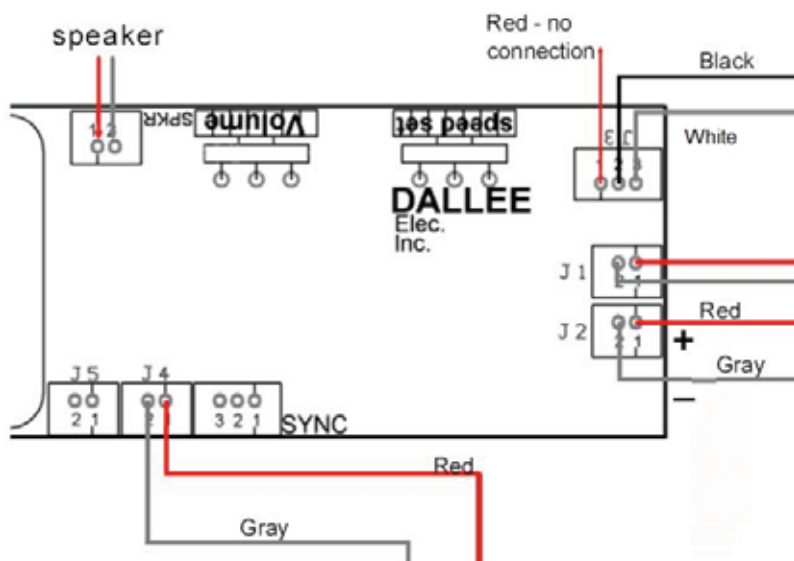
(Continued on page 12)



(fig. 18 - Close-up of board with two smoke unit connectors)



(fig. 19 - Two smoke units installed in loco)



(fig. 20 - Sound board connection drawing)

(Continued from page 11)

6. Set the switch on the top of the locomotive that normally turns the smoke units on or off to "on".

Here you see both smoke units connected to the smoke controller which is mounted to the side of the locomotive's body in the upper right corner (see fig. 19).

Now you can turn the smoke units on or off just by pressing one of the six number keys on the transmitter. Make sure you set the selected function button to LATCHING rather than MOMENTARY so that the smoke unit stays on when you press its function key.

### Sound Board Installation

Installation of the Dallee diesel sound card that was chosen for this locomotive is not "Plug & Play" but can be accomplished by following the instructions below. Four connections are made between the Dallee diesel sound card and the locomotive's main circuit board and three connections are made to the Train Engineer's receiver board (see fig. 20). This table shows the connections that need to be made (see fig. 20a).

1. Obtain a set of sound card installation cables from Aristo-Craft. This is part # 29608 (see fig. 21).
2. Cut the end with two metal pins off of the orange and black cable leaving the three pin plug on the other end.
3. Strip the insulation off of the orange and black wires and solder them to the stripped ends of

(Continued on page 13)



Dallee Sound Card	Main E8 Board	7 pin AUX plug on TE receiver
J3 Black	SOUND PWR - red wire	
J3 White	SOUND PWR -green wire	
J3 Red – Not Connected		
J1 Red – Not Connected		
J1 Grey	SOUND PWR - red wire	
J2 Red – Not Connected		
J2 Grey		Black COM
J4 Red		Green “a” - bell
J4 Grey		Blue “b” - horn
SPKR	SPK	

(fig. 20a - Sound board installation connections)

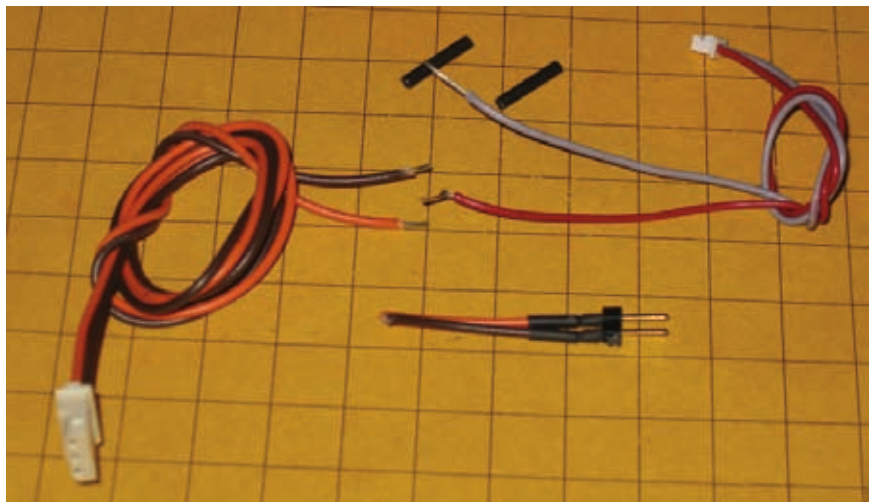
(Continued from page 12)

one of the two pin red and grey connecting wires that came with the Dallee sound card. Insulate this connection with tape or heat shrink tubing (see fig. 22).

4. Here is the completed cable assembly that will connect the sound card and the locomotive's speaker (see fig. 23).
5. Two more cables need to be made. The first connects the 7 pin auxiliary plug that fits into the receiver's AUX socket and two of the plugs that go into the Dallee sound board, J2 and J4. Note that the red wire on J2 has been cut as it is not used. At this time we are only using three of the control wires from the AUX plug, the black, common wire and the blue and green wires that are activated by buttons 1 and 2 on the transmitter. These will operate the horn and bell sounds (see fig. 24).
6. The other plug is shown here. It connects the green / red plug that goes into the SOUND PWR

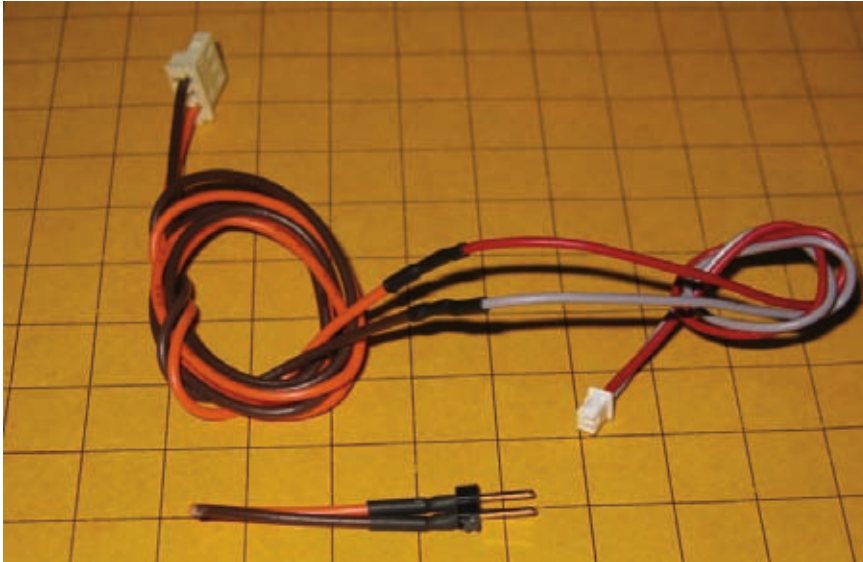


(fig. 21 - Sound card installation cables)

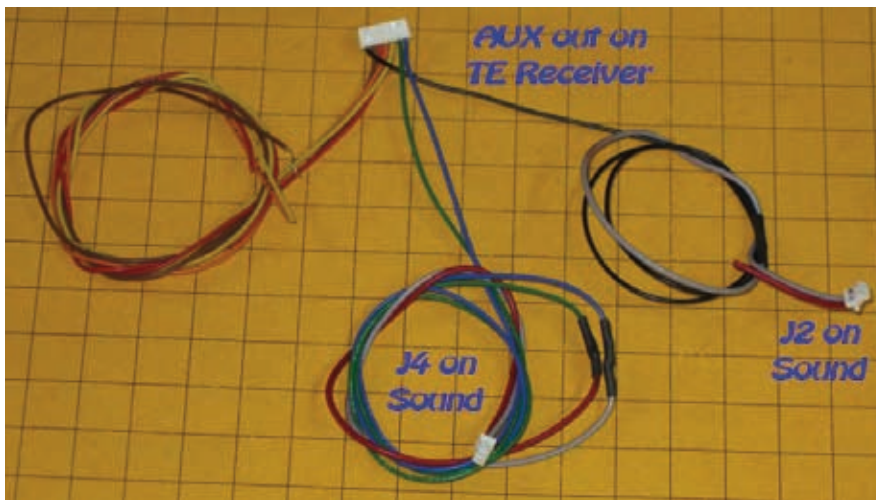


(fig. 22 - Insulate the connection with tape or heat shrink tubing)

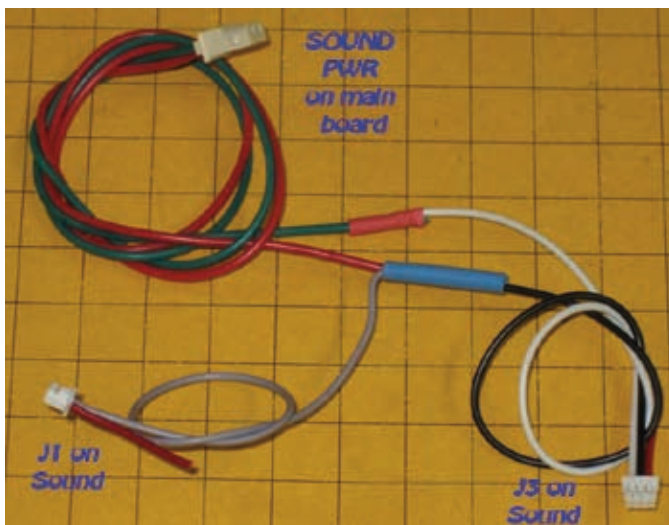
(Continued on page 14)



(fig. 23 - Completed cable assembly)



(fig. 24 - Cables for bell and horn sounds)



(fig. 25 - Completed cable connections)

*(Continued from page 13)*

plug on the locomotive to the plugs that go into J1 and J3 on the Dallee card. Note that the red wire on J1 has been cut as it is not used (see fig. 25).

7. The larger plug on the black and orange cable assembly plugs into the plug on the locomotive's control board labeled "SPK", for speaker. The other end of the cable plugs into the jack on the Dallee card marked "SPKR."

### Mounting the Sound Card

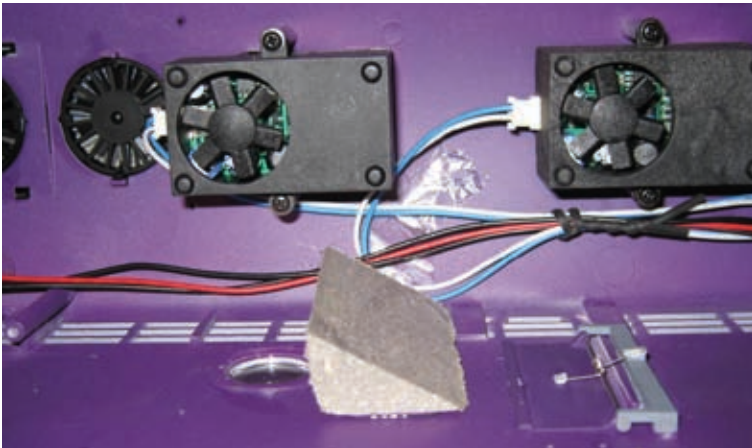
Dallee suggests that the sound card be mounted on the cover that goes over the top mounted switches on the locomotive. Although it would fit there I didn't like the idea of drilling holes and routing wires through the top of the locomotive to the sound card. Once again the opening doors provided the answer. I glued a triangular block of wood to the inside of the locomotive body beside one of the doors (see fig. 26).

The angle of the wood allows access to the volume adjustment potentiometer with a screwdriver that goes through the door. (see fig. 27).

Before mounting the sound card I took one precaution. The potentiometers on the board are only supported by the three wires that connect them to the board. Pushing on these pots from the side bends them over and eventually they would break off. Here you can see the pots and the wires that support them. Also note that the black wheel that rotates to change settings

*(Continued on page 15)*





(fig. 26 - Triangle block installed)

(Continued from page 13)

extends through the pot and out the back (see fig. 28).

A support made of hot melt glue was added to the back of the pots to support them (see fig. 29). Make sure you put a drop of grease on the back of the pot where the wheel comes through so that the glue will not adhere to the rotating part of the pot and keep it from moving. Now we can safely push on the controls through the door! (see fig. 27)

That completes the installation of the accessories. Our E8 is now set up so that button 1 on the keypad turns the bell on or off, button 2 sounds the

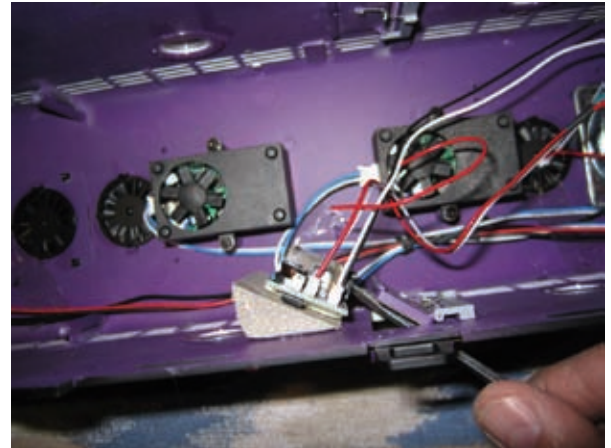
whistle and button 6 turns the smoke units on or off.

### Conclusion

There are a number of other features and options that I have not covered in this article but you can rest assured that each and every one will be explained in great detail in the manual. I am sure that that there will be changes to some screens and procedures as the system is refined and becomes even more capable.

I hope that have an opportunity to try out the Aristo-Craft Train Engineer Revolution yourself. I am very impressed with the construction and

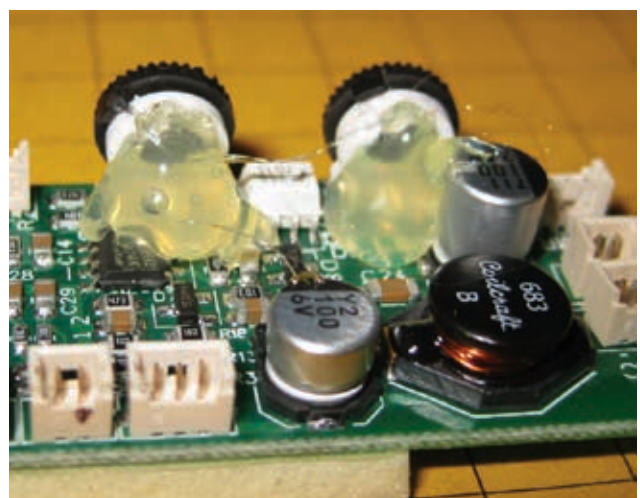
design of the unit. During the time that I have spent working with the transmitter and receivers I am pleased to say that I have had zero glitches or unexpected actions. In spite of its being brand new it operates as a mature, stable product. I am sure you will find, as I have, that it is truly revolutionary and that it will be a worthwhile addition to any garden railroad.



(fig. 27 - Easy access to volume controls)



(fig. 28 - Sound board "before" picture)



(fig. 29 - Sound board "after" picture)

## Large-Scale Train Show Report



**by Harry Hartman**

*Harry Hartman is the Large Scale Show Manager for the East Coast Large Scale Train Show.*

Happy New Year, fellow Aristo-Nauts! It is about eight days till Christmas as I am writing this article, so I hope you had a wonderful Christmas season with your family and friends. I hope the Ol' Bearded fellow brought you some new Aristo goodies! I noticed that there are some new road numbers for some of the 40-foot boxcars, which are coming in right after Christmas. I know Mrs. Claus had ordered them for me, so I am anxiously awaiting their arrival.

Did you get your copy of "How Model Trains Are Made"? I did and have watched it at least three times already. I got to see some of the raw footage at the Large Scale Train Shows that Lewis previewed over the past year. Many of you that attended the shows went to his seminars about this video.

By now, you have heard that we're not sponsoring a SELSTS and a MWLSTS in 2009. Instead we are going to concentrate our efforts on making the ECLSTS better and holding a second ECLSTS in the same year. For years, many of you have written in on the survey or have asked us individually to hold a second ECLSTS, so we have listened and decided to hold a SPRING ECLSTS (March 28th and 29th) and a FALL

ECLSTS (September 26th and 27th). These shows will be held in the Memorial Hall on the York Fairgrounds. They will be the same format as all the Large Scale Train Shows from the past couple years: Friday and Saturday show with times of 9:00 A.M. till 6:00 P.M. The Holiday Inn Express will be the official show hotel again. Maybe we can work up something for Friday evening at the hotel, even if it is to order in some pizza and have a "theme discussion" for the evening.

For the 2009 ECLSTS shows, there will be two different Double Door Boxcars. They are a FRISCO DD "Ship It on the Frisco!" and a Nickel Plate Road DD Boxcar. Each of these boxcars will come in four road numbers. Both cars will be available at both shows. There will not be a show engine for 2009.

As with all the show premiums, these items are only available at the show.



**2009 ECLSTS Frisco Double Door Boxcar**



**2009 ECLSTS Nickel Plate Road Double Door Boxcar**

No mail orders or phone orders will be taken. You must purchase these goodies at the shows. At the last show, the show box car sold out early Saturday morning, so don't be disappointed if you cannot get to the show on Friday. Get there as soon as the doors open on Saturday to make your show purchase.

It looks like the Spring ECLSTS show shirt will be a blue tee with white and yellow lettering for the Nickel Plate road name. We are presently looking at some other show premiums that will be offered for sale, but these items have not been finalized. More on these items in the March "Insider" or on the Aristo-Craft Forums for the ECLSTS. You can also look on the website of [www.largescaletrain-shows.com](http://www.largescaletrain-shows.com) for additional information as we get closer to the shows.

Now about the shows, we have had

*(Continued on page 17)*



*(Continued from page 16)*

inquiries from several new vendors for booth space. As in the past, we do not print a list of the vendors until about 30 days before the show.

We are excited about the prospects of the 2009 show. With gasoline going down in price, it will not cost as much to go to the show as it did last year at this time. Have you started your ECLSTS jar? I throw all my pocket change in the jar at the end of each day and then about a week before the show, I go to the local bank and cash in my ECLSTS Jar for my spending money for the show. I had a second jar last year for the "Center for Missing and Exploited Children Fund." TATE tells me he is waking up from his winter nap early to get some goodies ready for the fundraiser, so be sure to drop some change into the fundraiser jar at the show. You know it is a good cause.

I thought I would close out this article with some pictures from the past ECLSTS shows. If you close your eyes, you can almost feel like you are there. Hang in there! March and the Spring ECLSTS are coming!

Again, Kathy and I hope you had a wonderful Christmas Season with your friends and family and are looking forward to a fantastic new year, with lots of new trains! We hope to see you at the shows in 2009!



***Lineup for show cars and show t-shirts***



***Purchasing show cars out front***



***One of the clubs that display at the ECLSTS***



***Scott Polk talks with future garden railroaders***

## ***Track Project: Adding A Large Wye To A Small Layout***

***by Marty Cozad***

Our club's (River City Railroaders) portable layout needed a wye and we wanted a large one but had limited space. We bought some #6 switches and a large wye during one of Aristo's great sales. I took it home and looked it over for a few minutes and realized I could curve the two tracks coming out from the frog to save space. The layout has 10-foot-diameter curves, so I thought, why not bend the last part of the rails to fit with the 10-foot-diameter curves.

Photo 1 shows how I started by turning the switch over. I took my handy razor saw and cut the last four long ties, just to the right of the wires.

Next, I removed the rail joiners and the screws holding the rail from under the part I wanted to remove.

I then cut the long ties in half between the four long tie sections to make it easier to remove them.

Now, the club has a railbender, but one of the new members was using it to build his new empire. So, I laid the switch over a 10-foot-diameter curve and slowly started to bend each rail to where it matched over the curve. Take your time so you don't kink it.

Photo 2 shows the switch laying on top of the curve track. It shows how I cut the new tie sections to allow them to bend around the new curved rail. You will need 10 ties on each side.

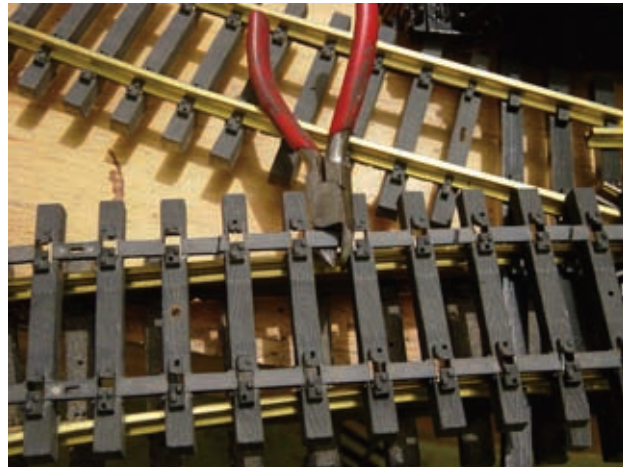
Photo 3 shows the almost finished product, but as you can see, my rails are longer on the outside parts of the switch. You will need to take a hacksaw with 32 tooth per inch to cut the extra rail off so it will line up with another 10-foot-diameter curve. You will cut off about 3/16" of an inch.

It's a simple fix and a good way to use a large switch in a tight area. It's about a 1-hour project.

Marty Cozad  
cozy6z@yahoo.com



**Photo 1 - Cutting the track**



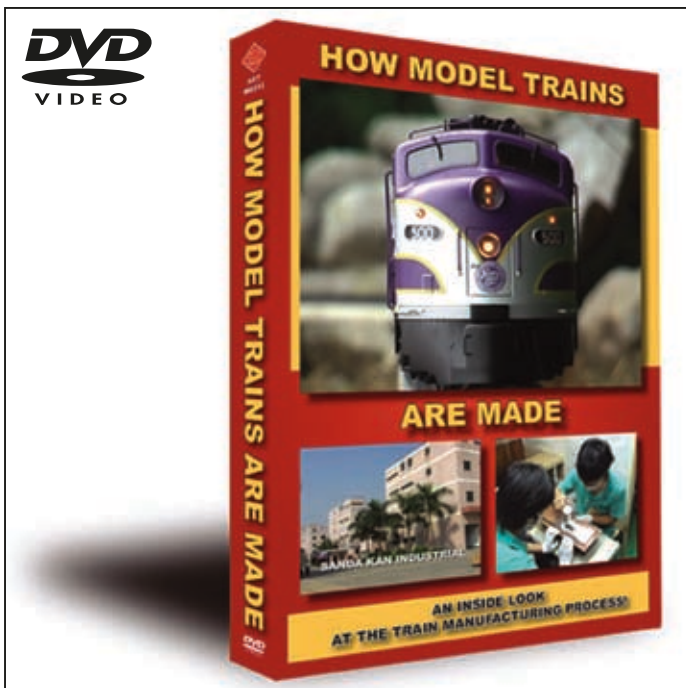
**Photo 2 - Cutting the ties to bend to the rail**



**Photo 3 - Almost the final product**



## HOW MODEL TRAINS ARE MADE - THE DVD



ART90010

**"HOW MODEL TRAINS ARE MADE" DVD**

Model railroading is an exciting hobby with millions of enthusiasts. However, few people know exactly what goes into model train manufacturing.

"How Model Trains Are Made" is a new and exciting DVD that takes viewers on an around-the-world trip to see the complex process of building a train from conception to completion.

Lewis Polk and Scott Polk of Aristo-Craft Trains lead this exciting and informative tour to Sanda Kan, one of the world's largest model train factories, located in China.

Every aspect of the production process is covered in this video: Engineering, metal mold building, painting, detail printing, assembly, electronics, product testing, and track manufacturing.

Whether you are an experienced model railroader or you are starting off with your very first loco, "How Model Trains Are Made" is a fascinating video that should be a part of every model railroader's collection!

**\$19.95 USD • Running Time: 35 minutes  
SD (720x480) • Color • NTSC**

**AVAILABLE NOW!**

**The 2009 Aristo-Craft Railroad Club**

**Continue Your Limited Edition Collection of Aristo-Craft Trains  
With Four 2009 Club Double-Door Boxcars in Military Roadnames!**

**AIR FORCE****ARMY****NAVY**

*Prototype photos shown are for representation only.  
Actual models may differ. Not shown: U.S. Marines boxcar.*

**MEMBERSHIP INCLUDES...**

- COLLECTOR EDITIONS OF ARISTO-CRAFT TRAINS AVAILABLE FOR EXCLUSIVE MEMBERSHIP PRICES AT OUR ONLINE STORE [www.aristocraft.com](http://www.aristocraft.com).

- A SPECIAL MEMBERSHIP CERTIFICATE AND CARD WITH A SPECIFIC NUMBER ASSIGNED ONLY TO YOU.

- A YEAR'S SUBSCRIPTION TO THE "INSIDER" E-MAIL (INTERNET) NEWSLETTER, CONTAINING INFO ON ARISTO-CRAFT TRAINS AND ADVANCE INFORMATION ON NEW ARRIVALS AND IN STOCK ITEMS.

- NEW CATALOGS, PRICE LISTS, AND FLYERS AS AVAILABLE.

- PROMOTIONAL OFFERINGS AS AVAILABLE.

**TERMS**

ARISTO-CRAFT RAILROAD CLUB MEMBERSHIP DOES NOT ALLOW YOU TO PURCHASE ANY ARISTO-CRAFT TRAINS PRODUCT LINE DIRECT OR FROM ANY AUTHORIZED ARISTO-CRAFT TRAINS' WHOLESALERS.

ARISTO-CRAFT RAILROAD CLUB MEMBERSHIP IS FOR CALENDAR YEAR 2009 AND EXPIRES 12/31/2009 REGARDLESS OF YOUR SIGN UP DATE OR RENEWAL. MEMBERSHIP DUES ARE SUBJECT TO CHANGE FOR FUTURE ENROLLMENT YEAR. YOUR NUMBER IS ASSIGNED PERMANENTLY WITH THE YEAR APPENDED TO THE NUMBER WITH RENEWAL.

MEMBERSHIPS ARE NON-VOTING.

PLEASE ALLOW 6-8 WEEKS FOR PROCESSING OF MEMBERSHIP.

2009 Club Models expected mid-year 2009.

**NO MEMBERSHIP FEE REQUIRED! MEMBERSHIP INCLUDED FREE WITH PURCHASE OF CLUB CAR!**

The Aristo-Craft Railroad Club is celebrating members of the U.S. Armed Forces in 2009! This year, we are offering the ART45100 Series Double-Door Boxcars in four military roadnames: Army, Navy, Air Force, and U.S. Marines. Each road name will come in four different road numbers, and every car comes equipped with metal wheels! Join the Aristo-Craft Railroad Club today!

Photocopies of this page are acceptable

CHARGE CARD ORDERS ONLY, ACTUAL SHIPPING COSTS WILL BE ADDED TO TOTAL PRICE.  
N.J. RESIDENTS, PLEASE ADD 7% SALES TAX.

**ARISTO-CRAFT RAILROAD CLUB 2009 APPLICATION FORM (PLEASE PRINT)**

NAME \_\_\_\_\_

PH# (\_\_\_\_) \_\_\_\_\_ E-Mail \_\_\_\_\_

ADDRESS \_\_\_\_\_

CITY/STATE/ZIP \_\_\_\_\_

CREDIT CARD # \_\_\_\_\_ EXP. \_\_\_\_\_

PLEASE CHECK ONE: \_\_\_\_\_ NEW MEMBERSHIP  
\_\_\_\_\_ RENEWAL

FOR CURRENT CLUB MEMBERS ONLY: Membership # \_\_\_\_\_  
Change of Address? Yes \_\_\_\_\_ No \_\_\_\_\_

MAIL TO: ARISTO-CRAFT 2009 RR CLUB  
POLK'S MODEL CRAFT HOBBIES  
698 S. 21st Street, Irvington, NJ 07111-4109

**CHOOSE YOUR CLUB MODELS HERE!**

Or order via [www.aristocrafttrainstore.com](http://www.aristocrafttrainstore.com)

- \_\_\_\_\_ U.S. Army Double-Door Boxcar  
4 road numbers available  
Metal Wheels Included  
\$50 each plus shipping
- \_\_\_\_\_ U.S. Navy Double-Door Boxcar  
4 road numbers available  
Metal Wheels Included  
\$50 each plus shipping
- \_\_\_\_\_ U.S. Air Force Double-Door Boxcar  
4 road numbers available  
Metal Wheels Included  
\$50 each plus shipping
- \_\_\_\_\_ U.S. Marines Double-Door Boxcar  
4 road numbers available  
Metal Wheels Included  
\$50 each plus shipping
- \_\_\_\_\_ TOTAL

(Charge card orders only. Actual shipping costs will be added to total price.)



**JANUARY-FEBRUARY CONSUMER SALE**  
**(Offer Valid in North America Only)****SALE #1:**

**BUY FOUR BOXES OF ARISTO-CRAFT TRACK OR TRACK ACCESSORIES,  
GET THE FIFTH BOX FREE!**

1. Buy four (4) **FULL Boxes of Aristo-Craft Track** and get a fifth box **FREE** of equal or average value! "Flex Rail" is included! \$25 U.S., \$75 Canada per box shipping and handling.

2. Buy four (4) **4' dia. or four (4) 10' dia or four (4) #6 Aristo-Craft Switches** and get a fifth **Switch FREE!** \$10 U.S., \$30 Canada per box shipping and handling.

3. Buy four (4) **Aristo-Craft ART-11350 or ART-20350 Rerailers** and get a fifth **Rerailer FREE!**

\$10 U.S., \$30 Canada per Rerailer shipping and handling.

4. Buy four (4) **Aristo-Craft ART-11031 Bumpers** and get a fifth **Bumper FREE!** \$5 U.S., \$15 Canada per bumper shipping and handling.

5. Buy four (4) **Aristo-Craft 30-Degree or four (4) 19.5-Degree Crossings or four (4) 90-Degree Crossings** and get a fifth **Crossing FREE!** \$10 U.S., \$30 Canada per crossing s&h.

6. Buy 4 boxes of **bulk pack ties in Euro (any**

**combination of ART-11003B and ART-11103B) or American (any combination of ART-30033B and ART-30103B)** and get a fifth box of **bulk pack ties FREE!** \$10 U.S., \$30 Canada per box of bulk pack ties shipping and handling.

7. Buy four (4) **ART-11299 Remote Switch Machines** and get a fifth **FREE!** \$5 U.S., \$15 Canada per switch machine shipping and handling.

**INSTRUCTIONS:** MAIL ARISTO-CRAFT YOUR ORIGINAL ITEMIZED AND DATED RECEIPT, A NOTE WITH YOUR RETURN ADDRESS (NO P.O. BOXES) SPECIFYING WHICH ITEMS PURCHASED AND SHIPPING AND HANDLING FEE BY MARCH 15, 2009 TO RECEIVE YOUR FREE PRODUCT(S). **PURCHASE MUST BE MADE BETWEEN JANUARY 1, 2009 AND FEBRUARY 28, 2009.** SALE CANNOT BE COMBINED WITH ANY OTHER SALE OR PROMOTION. SEE ABOVE AND SALES RULES & REQUIREMENTS #11 & #12 FOR SHIPPING & HANDLING DETAILS. OFFER IS VALID IN NORTH AMERICA ONLY.

---

---

**SALE #2:**

**BUY AN ARISTO-CRAFT 40' BOXCAR, STOCK CAR, OR REEFER CAR,  
GET A FREE SET OF ART-29411 BALL BEARINGS!**

**(Shipping & Handling \$10.00 US, \$15.00 Canada)**

- Customer must purchase and receive current production Aristo-Craft freight cars from dealer(s) during period of sale.

- Aristo-Craft reserves the right to exclude any freight car including discontinued road names that Aristo-Craft does not consider as current production.

- This sale includes the above current production freight cars listed in the 2009 Aristo-Craft Catalog, 2009 Aristo-Craft Price List, and Aristo-Craft On-Line Catalog at [aristocraft.com](http://aristocraft.com).

**INSTRUCTIONS:** MAIL ARISTO-CRAFT YOUR ORIGINAL ITEMIZED AND DATED RECEIPT, A NOTE WITH YOUR RETURN ADDRESS (NO PO BOXES) SPECIFYING WHICH ITEMS PURCHASED AND SHIPPING AND HANDLING FEE BY MARCH 15, 2009 TO RECEIVE YOUR FREE PRODUCT(S). **PURCHASE MUST BE MADE BETWEEN JANUARY 1, 2009 AND FEBRUARY 28, 2009.** SALE CAN NOT BE COMBINED WITH ANY OTHER SALE OR PROMOTION. SEE ABOVE AND SALES RULES & REQUIREMENTS #11 & #12 FOR SHIPPING & HANDLING DETAILS.

Please address your sales request along with your receipt to:  
**ARISTO-CRAFT TRAINS/POLK'S SPECIAL SALES**  
**698 S. 21<sup>ST</sup> STREET, IRVINGTON, NJ 07111-4109**

---

---

**SALES RULES & REQUIREMENTS (modified 11-29-05) READ BEFORE ORDERING!!!**

1. **The ORIGINAL receipt is required to be sent to Aristo-Craft for approval of sales request.** Computer generated copies and photocopies of receipts are strictly prohibited. Copies of receipts will be returned to the person who sent in the sales request without it being processed. Aristo-Craft will send the free offer directly to the customer and the sales dealer is not responsible for this transaction.

2. **The receipt must be ITEMIZED**, clearly showing the following..

- Which Aristo-Craft items were purchased (each item must be individually listed on the receipt)
- The price in which each Aristo-Craft item was purchased at
- The date when the Aristo-Craft items were purchased
- The name, address, and telephone of the hobby store from where the item was purchased
- The name, address, and telephone of the person buying the Aristo-Craft products.
- An invoice number (extremely preferable, but not mandatory)

Cash register receipts are **NOT** acceptable for this sales program and will be returned to the person who sent in the sales request without

it being processed. We recommend that, if you receive a cash register receipt from your place of purchase, you ask for an itemized receipt instead.

3. **Sales requests are not backordered.** Sale items are selected from products that are in stock in the Aristo-Craft warehouse during the period of the sale. We reserve the right to send you a product of comparable price and quality of our choice if sales items are out of stock. Customer selections of specific roadnames are subject to availability.

4. **Purchases must be made during the time period designated in the sales sheet.** Your sales request must be received by us in the same time period. There are no exceptions. All sales requests that do not meet this criteria will be returned to the person who sent it in.

5. **Sales are only for items designated in the Aristo-Craft sales sheet** and do not pertain to any other Aristo-Craft items that are not mentioned. Sales requests that do not meet this criteria will not be processed. If there are any questions of interpretation of what is on sale for the current month, please contact Aristo-Craft. Aristo-Craft is **NOT** responsible for any sales advertised by dealers and or retailers.

6. **The Aristo-Craft items you purchase from your dealer must be in stock.** They cannot be backordered. You must take delivery on the purchased items from your dealer during the period of the sale. Sales requests that do not meet this criteria will be returned to the person who sent it in.

7a. **Purchased items must be new**, "first-use" items. Used, secondhand, and or auctioned (including internet auction) items are not acceptable for this sale.

7b. **Items that are "cross-sold"** (i.e., from consumer to consumer, or from dealer to dealer) **are not acceptable for this sale.** Consumer sales must be "dealer to consumer" only. Dealer sales must be "distributor to dealer" only.

8. **Please allow 4-8 weeks for processing.**

9. **Original receipts returned upon request.**

10. **Aristo-Craft reserves the right to make the final decision as to whether a submitted receipt is valid** for the Aristo-Craft Sales Program.

11. **Each free item requires payment for Shipping & Handling.** (If Shipping & Handling Fee is **NOT** Specified elsewhere on sales sheet) Most items are \$10.00 each. Heavy and large items are \$20.00. Oversized or heavy items may require additional fee. Small items are \$2.00 each up to five, and \$10.00 for orders of five or more. See sales list for specific prices. Please include a charge card number, check or money order.

12. **When Sale is NOT restricted to Continental US: Canadian and Foreign orders must be on a charge card, International Money Order or check drawn on an American bank, NOT just on American Funds.** Foreign shipments are three times (3x) the shipping and handling fee specified for domestic shipping listed elsewhere on sale sheet. Otherwise: Foreign shipments are \$30.00 for most items. Heavy and large items are \$45.00. Small items are \$6.00 each up to five, and \$45.00 for orders of five or more. There may be additional fees. Shipment is via surface or sea post. We will charge the actual amount on air shipments according to your instructions.





# A.A.R. Dealer Directory

(Association of Aristo-Craft Retailers) - Stores Organized by State



## ARIZONA

Arizona Train Depot, Mesa, 480-833-9486  
The Hobby Place at Ace, Tucson 520-747-9473

## CALIFORNIA

B & F Hobbies, Bakersfield, 661-322-7955  
Big Y Yardage, Montclair, 909-624-8201  
Central Coast Trains, Atascadero, 805-466-1391  
D & J Hobby, Campbell, 408-379-1696  
Discount Trains Online, Riverside, 877-529-2834  
Doll House & Crafts, Novata, 415-883-0388  
Garden Railroad Supply, Martinez 925-228-8614  
Gibson's, Fountain Valley, 714-641-6611  
Glenview Supply, El Cajon, 619-443-1017  
Gold Coast Station, Ventura, 805-339-0379  
J. Gordon Specialties, Temecula, 951-693-2599  
Just Trains Concord, 925-685-6566  
Loco-Boose, Redwood City, 650-368-1254  
The Loose Caboose, Napa, 707-258-1222  
Marty's Hobby, Thousand Oaks, 805-497-3664  
Narrow Gauge Junc., La Habra, 562-694-0598  
R/C Country Hobbies, Sacramento, 916-731-5868  
Roy's Trains & Things, Clovis, 559-325-0102  
San Antonio Hobby, Mountain View, 650-941-1278  
San-Val Trains, Van Nuys, 800-423-3281  
Square Roundhouse, Turlock, 209-668-4454  
Talbot's Toyland, San Mateo, 650-342-0126  
Tom's Trains, Fresno, 559-266-3192  
The Train Stop, San Dimas, 909-599-2602  
Upland Trains, Upland 909-985-1246

## COLORADO

Caboose Hobbies, Denver, 303-777-6766  
Don's Hobbies, Greeley, 970-353-3115  
Mizell Trains Inc., Westminster, 303-429-2811  
RGSRH Hobbies, Ridgway, 970-708-2100

## CONNECTICUT

Amato's Toy & Hobby, New Britain 860-229-9069  
TimeMachine (N.E. Hobby), Manchester, 860-646-0610  
War & Pieces, W. Hartford, 860-232-0608

## DELAWARE

Just Trains, Newark, 302-266-8063  
L.H. Webb, Frederica, 302-335-5841

## FLORIDA

Budget Train Store, Jacksonville, 904-772-0929  
D & B Railways, Delray Beach, 561-495-0244  
Doug's Model Trains & Hobbies, Dunedin 727-733-8222  
Family Hobby Ctr., Naples, 239-261-8545  
Happy Tunes Music & Hobbies Lutz, 813-948-1419  
John's Hobbies Summerfield 352-347-7201  
Trains by Johnson, Pensacola, 850-478-8584

## GEORGIA

Model Railroad Shop Atlanta 770-432-7300  
Nordik Trains, Kennesaw, 770-928-2487  
Southeastern Train, Augusta, 706-796-0052  
TrainMaster, Duluth, 770-622-1611

## IDAHO

C & C Railroads, Coure D'Alene, 208-664-4895  
Garden Valley R.R. Sup., Pocatello, 208-238-9633

## ILLINOIS

Ace Hardware Aurora, 630-897-9227  
Bartlett Depot, Bartlett, 630-837-3376  
D&N Hobbies, Effingham, 217-536-6400  
Denny's Trains, Oswego, 630-554-6964  
First Hobby, Decatur, 866-240-0252  
L & B Hobby Palos Hills, 708-599-6250  
The Pizza Express, Carterville, 618-985-6262  
RLD Hobbies, Albion, 877-753-4629  
Rail Hobby Trains, Rockford, 815-484-9388  
St. Aubins Nursery, Woodstock, 815-334-0400  
Thunder Road Hobbies, Moline, 309-762-5295  
Trains of Yesterday, Morton Grove, 847-470-9500

## INDIANA

Iron Horse Logos, Hartford City, 765-289-2418  
Maple City Hobbies, Goshen 866-99-HOBBY  
Phil's Hobby Shop, Fort Wayne, 260-426-5056  
Samuelson's Train Shop Valparaiso, 219-462-2708  
The Train Yard, Indianapolis, 317-890-9774  
Watt's Trains, Zionsville, 800-542-7652

## IOWA

Box-Kar Hobbies, Cedar Rapids, 319-362-1291  
Caboose Stop Hobbies, Cedar Falls, 319-277-1754  
Fagan's Hobbies, Dubuque, 563-588-0846  
Hobby Corner, Iowa City, 319-338-1788  
Kidman Tree Farm, Polk City, 515-984-6946  
MidAmerica Hobbies, North Liberty, 319-665-9655

## KANSAS

Dad's Toys, Leavenworth, 913-662-1786  
Dee & Mee Hobbies, Topeka, 785-228-9601  
Garden Railroad Gizmos, Wichita, 316-262-4300  
Suburban Lawn & Garden, Shawnee Mission, 913-649-8700  
Toto Trains, Lawrence, 785-766-0467

## LOUISIANA

America's Train Yard, Baton Rouge, 225-926-5592

## MAINE

E. Boothbay Ctrl Supply, East Boothbay, 207-633-7703  
Highrailer, Waterville 207-873-1120  
Powder & patch buxton 207-929-4704

## MARYLAND

G Scale Train Station, Waldorf 866-374-9340  
Glyndon Gardens, Reisterstown, 410-833-2791  
M.B. Klein, Baltimore, 410-539-6207  
The Moose Caboose, Sykesville, 410-795-4610  
Smithsburg General Store, Smithsburg, 301-824-6330  
Star Hobby, Annapolis, 410-349-4290  
Train Depot, Mount Airy 301-607-8155  
Train Room, Hagerstown, 301-745-6681

## MASSACHUSETTS

Big-G-Trains Ayer, 978-772-9449  
Centerline Hobbies, Hyannis, 800-675-1244  
Charles Ro Hobbies, Malden, 800-225-4424  
Country Train Swansea, 508-669-5547  
Duxbury Green, Duxbury, 781-585-2164  
Hobbytown Stores, Hanover, 781-826-5279  
Hobbytown Stores, Quincy, 617-472-3887  
Pioneer Valley Hobbies Springfield, 413-732-5531  
Rpm Hobbies Abington, 617-786-7574

## MICHIGAN

Brassuer Electric, Saginaw, 989-793-4753  
C&T Hobbies, Cheboygan, 231-627-3603  
G & G Trains Leslie, 517-589-5977  
Great Lakes Hobby, Shelby Twnshp, 586-323-1300  
The Hobby Hub, Lansing, 517-351-5843  
Hobby World, Grand Rapids, 616-538-6130  
J & W Model, Coloma, 269-468-5586  
Jackie's Trains, Erie, 734-848-2068  
Junction Valley RR, Bridgeport, 989-777-3480  
Merri-Seven Trains, Livonia, 248-477-0550  
RC Hobbies, Waterford 248-681-1441

## MISSISSIPPI

HobbyTown USA Jackson, 601-957-9900

## MISSOURI

John's Train Supply, St. Louis, 314-993-2444  
Mark Twain Hobby Center, St. Charles, 636-946-2816  
Show Me Model RR, Grandview, 816-966-1534  
Schaefer's Hobby, St. Louis, 314-729-7077  
Trains Ltd., St. Louis, 604-703-1365  
Train Haus, Hermann, 573-486-0117  
Unique Toy & Game, Wildwood, 636-548-3700  
Hobby Station, St. Louis, 314-822-1927

## MISSOURI (continued)

Checkered Flag Hobby Country, St. Louis, 314-892-5353

## NEBRASKA

House of Trains, Omaha, 402-934-7245  
The Train Cellar, Lincoln, 402-464-4925  
Trainman's Trading Post, Omaha, 402-734-7233  
Train Time Hobby, La Vista, 402-502-6993

## NEVADA

Reno Rails Reno, 775-337-6669  
St. Aubins No. Las Vegas, 702-644-4799

## NEW HAMPSHIRE

Hartmann Model Railroad, Intervale, 603 356-9922  
Mountain Trains, Manchester, 603-622-8982

## NEW JERSEY

Allied Hobbies, Burlington, 609-386-5044  
Big Little RR Shop, Somerville, 908-685-8892  
Bill Bitter Flowers & Plants, Wall 732-681-3681  
Dougherty's Whistle Stop, Summit, 908-277-4442  
Hi-Way HobbyHouse, Ramsey, 201-327-0075  
Hobymasters, Inc, Red Bank, 877-674-6229  
HOGTRAINZ, Manalapan, www.HOGTRAINZ.COM  
The Model Railroad Shop, Piscataway 732-968-5696  
Ridgefield Hobby, Ridgefield, 201-943-2636  
Standard Hobby, Mahwah, 800-223-1355  
Tony's Train Town, Cedar Grove, 973-857-2337  
Track "33" Inc., Westville, 856-423-2723  
Watermelon Bar & Garden, Atl.Hghlnds 732-291-0613  
Zeppelin Hobbies, Riverdale, 973-831-7717

## NEW MEXICO

Wig-Wag, LLC, Albuquerque, 888 293-0736

## NEW YORK

Aurora Hobbies, E. Aurora, 716-652-5718  
Dee's Tiques & Train Shop, Delhi 607-746-6900  
Hobbytime, Plainview, 516-933-3818  
Hobbytown U.S.A., Islandia, 516-342-1518  
Lantz Train Shop, Horsehead, 607-795-5038  
Niagara Hobbies, Buffalo, 716-681-6060  
Pine Valley, Syracuse, 315-470-0157  
Prince Hobby, Forest Hills, 718-520-9016  
Roberts Lines, Walworth, 315-986-1365  
Ridge Road Station, Holley, 877-447-2253  
Trainland, Lynbrook, 800-221-0846  
Trainworld, Brooklyn, 800-541-7010  
Westchester Hob., White Plains, 914-421-1262

## NORTH CAROLINA

Covered Wagon, McLeansville, 336-697-0255  
Little Choo Choo, Spencer, 704-637-8717  
Railfan Specialties, Wilmington, 910-686-2820  
Tom's Train Station, Raleigh, 919-388-7246  
Train Buddy Products, Wake Forest 919-562-4378

## OHIO

Cross Creek Eng., Spencer, 800-664-3226  
Crouse Mill True Value, N. Lima, 330-549-2143  
Depot Trains, Cleveland, 216-252-8880  
Forgotten Thyme Gardens, Medina, 330-723-1948  
G Scale Junction, Newark, 800-311-9448  
The Hobby Shop, Dayton, 937-436-6161  
Phil's Hobby Shop, Defiance, 419-782-8020  
Sandy's Hobby's, Elyria, 440-365-9999  
Smithville Model Train, Smithville, 330-669-8589  
Smokestack Hobbies, Hamilton, 513-779-1161  
Train Car Ltd. Newark, 740-745-2798  
Velk's Flowers, Multiple Locations, 800-952-0284

## OKLAHOMA

Last Train Stop, Owasso, 918-277-2990  
Woodward's Hobbies Oklahoma City, 405-751-4994



# A.A.R. Dealer Directory

(Association of Aristo-Craft Retailers) - Stores Organized by State



## OREGON

Eugene Toy, Eugene, 503-344-2117  
Larry's Lighting Repair, Portland, 503-238-1714  
Scheffel's Toys, Jacksonville, 503-899-7421  
Tammies Hobbies, Beaverton, 503-644-4535  
Train Mountain, Chiloquin, 541-783-3030

## PENNSYLVANIA

A.B. Charles & Son, Pittsburgh, 412-561-1615  
Allied Hobbies:  
Exton, 610-363-6988  
Philadelphia, 215-677-1123  
Choo Choo Train, Hudson, 570-824-3471  
CoolTrains Hobbies, Salunga, 717-898-7119  
Derr's REA, Williamsport, 570-323-5714  
Dreamboat Hobbies, Warren, 814 723 8052  
Englers Train Depot, Allentown, 610-791-9512  
Fischel's Hobby Center, Dubois, 814-371-1482  
Fleetwood Building Block, Fleetwood, 610-944-8385  
Frey's Evergreen, Willow Street, 717-786-3974  
Iron Horse Hobby House, Reading, 610-373-6927  
J&B Hobbies, Mechanicsburg, 717-766-0709  
Landscape Materials, New Tripoli 610-767-9507  
Loco Louie's, Milmont, 610-583-7711  
Long Lane Acres, Ottsville, 610-847-2586  
Nicholas Smith, Broomall, 800-848-9119  
The Train Shoppe, Wilkes-Barre 570-824-7688  
Trains & Lanes Hobbies, Easton, 610-253-8850  
Victoria's Treasures Womelsdorf, 610-589-9000  
Village Toy Shoppe, Lahaska, 215-794-7031  
Warrior Run Loco, Nanticoke, 570-735-5570  
Wood Wicker & Wax, Levittown, 215-945-5522

## RHODE ISLAND

Grandpa's Trains Warwick 401-463-7803

## SOUTH CAROLINA

The Great Escape, Greenville, 803-235-8320  
New Brookland RR, W. Columbia, 803-791-3958

## SOUTH DAKOTA

Donovan's Hobby & Scuba Center, Sioux Falls, 605-338-6945

## TENNESSEE

Jack's Trains, Johnson City, 423-282-9108  
Model & Hobby World, Elizabethton, 423-543-5304  
Sloans Fine Art & Hobby, Dickson, 615-446-1055  
Smoky Mountain Model Trains Sevierville 865-428-8595  
Southbound Trains, Franklin, 888-844-4403

## TEXAS

B & H Hobbies, Corpus Christi, 512-985-8383  
The Collectible Caboose, Cedar Park 512-259-9494  
Midlothian Hobbies, Midlothian 972-723-0171  
Mike's Hobby Shop, Porter, 281-577-8250  
Model Train Crossing, Hurst, 817-595-0800  
Papa Ben's Train Place, Houston, 713-523-5600  
Rent-A-Dad, McAllen, 210-631-8741

## UTAH

Almosta Junction, Clearfield, 801-776-1656  
Earl's Hobby Hangar, Logan, 435-752-4401  
M.R.S. Hobby Shop, Sandy, 801-572-6082

## VIRGINIA

Deltaville Depot, Deltaville, 804-776-7250  
Locust Grove Trains, Locust Grove 540-854-8955  
The Nutbush Express, Woodstock, 540-459-5136  
Quisenberry Station, Alexandria, 703-799-9643  
RicksHobbyShop.com, Roanoke 540-362-7033  
Train Depot, Manassas, 703-335-2216  
Trains ETC., Lorton, 703-550-1779  
TSG Hobbies, Warrenton, 540-347-9212

## WASHINGTON

Big Trains America, Spokane, 509-484-7098  
The Cobbler's Train Shop, Camas, 360-834-3183  
Clover Leaf, Union Gap, 509-453-8959  
Eastside Trains, Kirkland, 425-828-4098

## WISCONSIN

Candle Freak Gallery & Gifts, Wautoma 920-787-2780  
Engine House Services, Green Bay, 920-490-4839  
Greenfield News & Hobby, Greenfield 414-281-1800  
Hobby Depot America, Hubertus, 262-628-2800  
John's Hobbies, Hartford, 262-673-7454  
The Little Falls Railroad, Sparta, 608-272-3266  
Phil's Hobby & Craft, Wautoma, 920-787-7232  
Sommerfeld's, Butler, 262-783-7797

## CANADA

AC Trains, Burlington, Ont. 866-838-3441  
Art Knapp Plantland Surrey, B.C. 604-596-9201  
Canadian Scale Rail, Olds, Alb. 403-556-3771  
Chinook & Hobby West Calgary, Alb. 403-243-1997  
The Credit Valley Streetsville, Ont. 905-826-1306  
George's Trains Toronto, Ont. 416-489-9783  
Hockley Valley RR, Alliston, Ont. 705 435 7024  
Hutch's Trains Burlington, Ont. 905-637-3721  
Maritime Hobbies Halifax, N.S. 902-423-8870  
NVSI- VCR Repair, Kanata, Ont. 613-592-9402  
TLA Custom Models & Hobby Wilton Ont 613-386-7720  
Township Toy Trains, Knowlton, Qub. 450-243-1881  
Trains & Such, Calgary, AB 403-277-7226  
Udisco LTD, Montreal, Qub. 514-481-8107  
Ultimate Trains, Nanton, Alb 877-646-1190  
Winona Garden Railway, Guelph, Ont 519-763-9477

## INTERNATIONAL

### United Kindom/England

Garden Rwy. Centres, Cheltenham, England 44-1242-519770  
Garden Rwy Spec., Buckinghamshire, England +44 (0)1844 345158  
Glendale Junction, Deeping St James, England 01778 343183  
Hobbybahn Stapeton, England 0044-01455-847379  
Kernow Model Rail Centre, Camborne/Kambronn UK 01209 714099  
Kent Garden Railways, St. Mary Cray, Eng 44 1689 891668  
Martin's Models, Kington, England 44-1544-230777  
OnTracks.co.uk Pontrilas, England +44 (0) 8700 111 131  
Scottish Garden Rwy, Stirling, Scotland 01786-464193  
Spot-On Models & Games, Swindon Wilts, UK 01793 617302  
Totally Trains, Herefordshire, England 44-1989-567577

### Germany

All American Trains, Kaarst, Ger 49-2131-769640  
Fertig Modellbahnen, Moerlenbach, Ger 49-6209-4265  
Gartenmodelleisenbahn und Mehr, Eschborn, Ger 49-6173-966230  
Modellbaushop Drexler, Gross-Rohrheim, 49-6245-997852  
Modelleisenbahn Center Schuler, Stuttgart, 49-711-608375  
Sammeler-Service Scheyern, Ger 49-8441-22-44  
Semaphore Trains, Weil am Rhein, Ger 49 7621 577317

### Europe

Bigtrains&more Ltd, Sissach, Switzerland 61 971 6615

### Japan

Train Depot, Tokyo, Japan 813-3718-8916

### Australia

Adelaide Garden Railway Supplies, Goodwood,  
South Australia 8 82716875  
Model Merchant, Sydney, Australia 02-9555-9537

### Africa

Hobbydoc Capetown S.Africa 27214477528



**NEW ARRIVAL LIST****NEW ARRIVALS AS OF 12-30-08**

___ART46003	BOX CAR (STEEL) ATSF	75.00
___ART46008	BOX CAR (STEEL) B&O SENTINEL	75.00
___ART46010	BOX CAR (STEEL) UP	75.00
___ART46011	BOX CAR (STEEL) B&O TIMESAVER	75.00
___ART46056	BOX CAR (STEEL) SO. RWY.	75.00
___ART46063	BOX CAR (STEEL) B.N.	7.00
___ART-23606	E-8 DIESEL CP	400.00
___ART23611	*E-8 DIESEL NYC	400.00
___ART23612	*E-8 DIESEL CN BUSINESS	400.00
___ART23614	E-8 DIESEL ERIE LACKAWANA	400.00
___ART29100	MODERN FREIGHT TRUCK	33.00
___ART29111S	METAL WHEEL SETS SILVER	27.00
___ART29123B	BALL BEARING WHEEL SET BLACK	51.00
___ART7206	CHURCH BUILT UP	125.00
___ART29117	TRUCK FOR STREAMLINE CARS	68.00
___ART29109	TRUCK W. 4 METAL WHEELS	48.00
___ART23600	E-8 UNDEC.	400.00
___ART23601	E-8 DIESEL PRR	400.00
___ART23602	E-8 DIESEL SP	400.00
___ART23603	E-8 DIESEL UP	400.00
___ART23605	E-8 DIESEL B&O	400.00
___ART23613	*E-8 DIESEL AMTRAK	400.00
___ART23615	*E-8 DIESEL ERIE	400.00
___ART23619	*E-8 DIESEL ATSF PAINTED	400.00
___ART23620	*E-8 DIESEL CB&Q PAINTED	400.00

**NEW ARRIVALS AS OF 12-20-08**

___ART11095	*72" STRAIGHT FLEX TRACK W/CLAMPS-6 <i>NEW FLEX TRACK W/RAIL CLAMPS</i>	255.00
___ART11096	*72" FLEX TRACK W/CLAMPS (12)	510.00
___ART20194	SS STRAIGHT TRACK 5' (6)	326.00
___ART20195	SS STRAIGHT TRACK 5' (12)	634.00
___ART20060	SS STRAIGHT TRACK 2'	124.00
___ART20100	SS CURVE TRACK 4'	134.00
___ART20110	SS CURVED TRACK 5'	160.00
___ART20090	SS STRAIGHT TRACK 3'	372.00
___ART20370	SS WIDE RADIUS SWITCH MANUAL RIGHT	74.00
___ART20380	SS WIDE RADIUS SWITCH MANUAL LEFT	74.00
___ART20035	SS RAIL 8' TUBE (12)	416.00
___ART20121	SS CURVE TRACK 11.5'	346.00
___ART11940	RAIL CLAMPS SILVER PLATED (10)	15.00
___ART11930	RAIL CLAMPS BRASS (0)	12.00
___ART11930B	RAIL CLAMPS BRASS BULK (100)	100.00
___ART11900	BRASS RAIL JOINERS (12)	7.00
___ART11100	CURVE TRACK BRASS 4'	92.00
___ART30400	19.5 CROSSING	60.00
___ART12105	*RAIL - ALUMINUM 8'	200.00
	<i>NEW ALUMINUM ECONOMY RAIL SIZES</i>	
___ART12190	*ALUMINUM FLEX TRACK 72" W/CLAMPS (12)	234.00
___ART11004B	*FLEX TIES (48)	72.00
	<i>TO USE WITH DUAL RAIL BENDER TO COME</i>	

**ON-HAND LIST AS OF 12/29/08**

Item	Description 1	List			
ART11000	12" STRAIGHT TRACK (12PCS)	92.00	ART22003C	FA-1+CABOOSE B&O	287.00
ART11003	TRACK TIES 1' STRAIGHT EURO	1.30	ART22006C	FA-1+CABOOSE PRR	287.00
ART11003B	TRACK TIES 1' STRAIGHT EURO	61.00	ART22008C	FA-1+CABOOSE D&RGW	287.00
ART11004B	FLEX TRACK TIES 1' EURO 48PCS	61.00	ART22032C	FA-1+CABOOSE NAPA	287.00
ART11060	24" STRAIGHT TRACK(12PCS)	184.00	ART22101C	U25-B SP/SO.PACIFIC-GREY	287.00
ART11070	36" STRAIGHT TRACK(12PCS)	276.00	ART22107C	U 25-B DRGW W/CABOOSE	287.00
ART11091	REVERSING UNIT/SOFTSTART ONLY	56.00	ART22125C	U 25-B N.S. W/CABOOSE	287.00
ART11095	EURO STRAIGHT 6' W/CLAMPS 6PCS	255.00	ART22200	RS-3 UNDECORATED (GREY)	287.00
ART11096	72" STRAIGHT TRACK(12PCS) W	510.00	ART22205C	RS-3 DRGW + CABOOSE	287.00
ART11098	60" STRAIGHT TRACK (6)	256.00	ART22209C	RS-3 SO.RAILWAY + CABOOSE	287.00
ART11099	60" STRAIGHT TRACK(12PCS)	486.00	ART22213C	RS-3 B&O + CABOOSE	287.00
ART11100	CURVE TRACK 4'DIAM(12PCS)	92.00	ART22310-3	FA1-B-A ATSF	665.00
ART11101	EURO TRACK CURVE 1/2	48.00	ART22501C	LIL'CRITTER PRR W/CAB	145.00
ART11103	EURO TRACK TIES CURVED	1.30	ART22502C	LIL'CRITTER B&O W/CABOOSE	145.00
ART11140	20" DIAM. CIRCLE OF TRACK	80.00	ART22503C	LIL'CRITTER UP W/CABOOSE	145.00
ART11145	31" DIAM TRACK (4) FOR BARREL	90.00	ART22505C	LIL'CRITTER ATSF W/CABOOSE	145.00
ART11210	SWITCH-MANUAL LEFT	40.00	ART22506C	LIL'CRITTER DRGW W/CABOOSE	145.00
ART11215	SWITCH-REMOTE LEFT	50.00	ART22601C	CEN.CAB IND.SW.PRR W/CAB	215.00
ART11297	MANUAL SWITCH MACHINE	8.00	ART22603C	CEN.CAB IND.SW.UP W/CAB	215.00
ART11300	30 DEGREE CROSSING	40.00	ART22605C	CEN.CAB IND.SW. ATSF W/CAB	215.00
ART11351	RE-RAILER W/ GAP & DIODES	20.00	ART22606C	CEN.CAB IND.SW.D&RGW /WCAB	215.00
ART11500	CURVE TRACK MED 5' DIAM	128.00	ART22701	EGG LINER - ATSF	99.00
ART11550	EURO CURVE TRACK 6.5' BRASS	168.00	ART22702	EGG LINER - UNION PACIFIC	99.00
ART11600	EURO CURVE TRACK LGE. 8' BRASS	206.00	ART22703	EGG LINER - ATLANTIC COAST LIN	99.00
ART11700	CURVE TRACK 9' DIAMETER BRASS	232.00	ART22704	EGG LINER - SO. PACIFIC	99.00
ART11800	EURO CURVE TRACK 10' BRASS	254.00	ART22705	EGG LINER - SO. RWY.	99.00
ART11801	EURO CURVE 11.5' BRASS	296.00	ART22706	EGG LINER - PENNSYLVANIA	99.00
ART11802	EURO CURVE TRACK 12.5' BRASS	320.00	ART22707	EGG LINER - LADY BUG	99.00
ART11803	EURO CURVE TRACK 14' BRASS	360.00	ART22710	EGG LINER - RUSSIAN JEWEL	135.00
ART11804	EURO CURVE TRACK 15' BRASS	384.00	ART22725	EGG LINER - CHRISTMAS	99.00
ART11805	EURO CURVED TRACK 16.5' BRASS	416.00	ART23501	GP-40 DIESEL B&O	352.00
ART11820	EURO CURVE TRACK 20' BRASS	514.00	ART23502	GP-40 DIESEL ATSF	352.00
ART11900	RAIL JOINERS(12PACK)BRASS	7.00	ART23504	GP-40 DIESEL CHESSIE B&O	352.00
ART11900B	TRACK RAIL JOINERS (50)	24.00	ART23505	GP-40 DIESEL D&RGW	352.00
ART11901	RAIL JOINERS (4PACK) PLASTIC	4.50	ART23506	GP-40 DIESEL C&NW	352.00
ART11901B	RAIL JOINERS (25PACK) PLASTIC	21.00	ART23507	GP-40 DIESEL W.MARYLAND	352.00
ART11902	TAP & DRILL SET 2MM FOR TRACK	8.00	ART23508	GP-40 DIESEL SSW COTTON BELT	352.00
ART11906	TRACK GAUGE w/ LEVEL	11.00	ART23509	GP-40 DIESEL GTW	352.00
ART11910	SOCKET HEAD TRACK SCREW	4.50	ART23510	GP-40 DIESEL BNSF	352.00
ART11911	RAIL TO TIE SCREWS (50)	6.00	ART23511	GP-40 DIESEL B&M	352.00
ART11930	RAIL CLAMP BRASS (10PCS)	12.00	ART23600	E-8 UNDEC.	400.00
ART11930B	RAIL CLAMP BRASS BULK (100)	100.00	ART23601	E-8 PRR	400.00
ART11940	RAIL CLAMP (10) SILVER PLTD.	15.00	ART23602	E-8 SP	400.00
ART11940B	RAIL CLAMP SS PLATED BULK(100)	120.00	ART23603	E-8 UNION PACIFIC	400.00
ART11950	WIRE W/LUG FOR JOINERS (10)	12.00	ART23604	E-8 ACL	400.00
ART12105	ALUMINUM RAIL 8' (12 PCS)	200.00	ART23605	E-8 B & O	400.00
ART12110	ALUMINUM CURVE TRACK 4'(24PCS)	216.00	ART23606	E-8 DIESEL CP BEAVER/MAROON	400.00
ART12190	ALUM. TRACK 72" ST FLEX (12PC)	234.00	ART23611	E-8 DIESEL NYC	400.00
ART12202	ROADBED - 5' CURVED	46.00	ART23612	E-8 DIESEL CN	400.00
ART12203	ROADBED - 8' CURVED	20.00	ART23613	E-8 DIESEL AMTRAK	400.00
ART12204	ROADBED - 10' CURVED	20.00	ART23614	E-8 DIESEL EL	400.00
ART12301B	GRID SHELF 15 X 24 BLACK	13.00	ART23615	E-8 DIESEL ERIE	400.00
ART12302B	GRID 1/4 ROUND CURVE BLACK	8.00	ART23619	E-8 ATSF PTD	400.00
ART12303B	GRID INSIDE CORNER BLACK	12.00	ART23620	E-8 CB&Q PTD. W/RED STRIPE	400.00
ART12303WB	GRID INSIDE CORNER WHITE	10.00	ART28001RC	0-4-0 FRT STARTER SET R/C PRR	339.00
ART12305	GRID S HOOK FOR DOOR AREA	0.75	ART28009RC	0-4-0 FRT STARTER SET R/C SF	339.00
ART12306	GRID SUSPENSION HOOK 10	1.50	ART28101RC	0-4-0 PSGR STARTER SET R/C PRR	393.00
ART12307	GRID SUSPENSION HOOK 20	2.00	ART28125RC	0-4-0 STARTER SET PSGR RC XMAS	393.00
ART12310	SUSPENSION BAR 16 BLACK	8.00	ART28302RC	LIL'CRITTER SET R/C ATSF	339.00
ART12312	GRID BRACKET FOR TOWER 15	7.00	ART28601RC	EGGLINER SET - LADY BUG	200.00
ART12316	CEILING GRID CLIP	2.00	ART28602RC	EGGLINER SET - CHRISTMAS	200.00
ART12401	TRACK SUPPORT FLOWER TUB (6)	12.00	ART28604RC	EGGLINER SET - ATSF	200.00
ART20031	USA STR. TRACK 1/2 S.S.	64.00	ART29098	FRT.TRUCK W/METAL WHEELS&BB	55.00
ART20035	STAINLESS STEEL RAIL 8' 12 PC	416.00	ART29099	MODERN FREIGHT TRUCKS W/PL WHL	21.00
ART20060	SS STR. TRACK 2'	248.00	ART29100	MODERN FRT TRUCK W/ROLL.	33.00
ART20090	SS STR. TRACK 3'	372.00	ART29101	TRUCK-FREIGHT PLASTIC WHEELS	23.00
ART20100	SS CURVE TRACK 4' (	124.00	ART29102	TRUCK-CABOOSE METAL WHEELS	48.00
ART20110	SS CURVE TRACK 5'	160.00	ART29105	ROGERS LOCO METAL SML.WHL.SET	15.00
ART20121	SS CURVE TRACK 11.5'	346.00	ART29106A	ROGERS FRONT DRIVE WHEELS	20.00
ART20122	SS CURVE 12.5' DIAM	380.00	ART29106B	ROGERS BACK DRIVE WHEELS	20.00
ART20125	SS CURVE TRACK 20' DIAM	620.00	ART29107	TRUCK-PSGR(WOOD)METAL WHEELS	48.00
ART20194	SS STRAIGHT TRACK 5' (6)	326.00	ART29108	TRUCK-LONG TENDER (PAIR)	48.00
ART20195	SS USA STR. TRACK 5' (12)	624.00	ART29109	TRUCK-HWT.PSGR.(PAIR)	48.00
ART20199	SS RAIL JOINERS (12)	7.00	ART29111B	METAL WHEELS - BLACK 4 AXLES	27.00
ART20199B	SS RAIL JOINERS BULK (48)	25.00	ART29111D	MTL WHLS - BLK 4 AXLE W/O HUB	27.00
ART20340	SS #6 SWITCH LEFT	182.00	ART29111S	METAL WHEELS SILVER 4 -AXLE	27.00
ART20345	SS #6 WYE SWITCH SS	120.00	ART29112	SPRINGS-FREIGHT TRUCK	6.00
ART20370	SS SWITCH WIDE MANUAL RIGHT US	74.00	ART29113	SPRINGS-PASSENGER TRUCK	6.00
ART20375	SIDING FOR 10' DIAM.SWITCH	25.00	ART29114	SPRINGS-DIESEL TRUCK	6.00
ART20380	SS SWITCH WIDE MANUAL LEFT USA	74.00	ART29115	TRUCK-SLOPE TENDER (PAIR)	48.00
ART20400	SS CROSSING 19.5	60.00	ART29117	TRUCK-PSGR. STRMLN	68.00
ART20405	SS CROSSING 30 DEGREE	45.00	ART29118P	DIESEL BUSHING (PREVIOUS)	9.00
ART20410	SS CROSSING 90 DEGREE	45.00	ART29119S	SPRINGS STREAMLINE SILVER	7.00
ART21202C	DOODLEBUG - B & O W/COACH	300.00	ART29120	TRUCK-DELTON TO ARISTO (PR)	7.00
ART21205C	DOODLEBUG - SO.RWY W/COACH	300.00	ART29123B	BALL BEARING WHEELS 2 AXLES BL	51.00
ART21209C	DOODLEBUG - D&RGW W/COACH	300.00	ART29130	METAL WHEEL REPLACEMENT	14.00
ART21850	LONG VAND. TENDER -UNDEC BLK	199.00	ART29131	METAL DIESEL WHEEL W/TIRE	15.00
ART21875	USRA TENDER - UNDEC	199.00	ART29132	INNER GEAR BOX W/ WHEELS	33.00
ART21925	SLOPE TENDER CHRISTMAS	100.00	ART29132B	INNER GEAR BOX W/O WHEELS	12.00
			ART29134	COMMONWEALTH 6 AXLE TRUCK PR	80.00



ART29196	COUPLER-KNUCKLE (1 PAIR) E-8	11.00	ART31659	STD.HVY.WHT BAGGAGE D&RGW	242.00
ART29197	COUPLER-KNUCKLE (1 PAIR)DASH 9	10.00	ART31660	STD.HVY.WHT BAGGAGE SP DAYLT.	242.00
ART29198	KNUCKLE COUPLER (50 PR.s)	400.00	ART31711	STD.HVY.WHT.COMBINE ATSF	210.00
ART29199	KNUCKLE COUPLER (6PR.)	53.00	ART31732	STD.HVY.WHT.COMBINE NAPA	210.00
ART29200	COUPLER-KNUCKLE (1 PAIR)	11.00	ART31801	STD.HVY.WHT.PULLMAN PRR	242.00
ART29201	COUPLER RS-3/LIL' CRITTER	14.00	ART31802	STD.HVY.WHT.PULLMAN B&O	242.00
ART29203	HOOK & LOOP COUPLER 6 PR	175.00	ART31805	STD.HVY.WHT.PULLMAN SO.CRESC.	242.00
ART29205	COUPLER- KNUCKLE (PR) SD-45	11.00	ART31808	STD.HVY.WHT.PULLMAN UP	242.00
ART29301	SMOKE STACK(OPG)STV/PSG.CAB.	23.00	ART31810	STD.HVY.WHT.PULLMAN SP	242.00
ART29302	SMOKE STACK(OPG)ROGERS LOCO	20.00	ART31811	STD.HVY.WHT.PULLMAN ATSF	242.00
ART29304	SMOKE STACK(OPG) PSGR.WOOD	20.00	ART31817	STD.HVY.WHT.PULLMAN C&NW	242.00
ART29305	SMOKE UNIT-LOCO FA/FB-1	23.00	ART31832	STD.HVY.WHT.PULLMAN NAPA	242.00
ART29306	SMOKE UNIT-STEAM LOCO 0-4-0	23.00	ART31901	STD.HVY.WHT SET PRR	966.00
ART29309	SMOKE UNIT-LOCO RS-3	23.00	ART31902	STD.HVY.WHT SET B&O	966.00
ART29311	SMOKE UNIT SD-45	48.00	ART31905	STD.HVY.WHT. SET SO. CRESC.	966.00
ART29313	SMOKE UNIT PARTS	7.00	ART31908	STD.HVY.WHT. SET UP	966.00
ART29351B	MOTOR BLOCK FOR REPAIR DEPT	0.00	ART31910	STD.HVY.WHT. SET SP DAYLIGHT	966.00
ART29352	UNIVERSAL FOR PACIFIC 6 PACK	20.00	ART31932	STD.HVY.WHT. SET NAPA VALLEY	966.00
ART29356	MOTOR BLOCK - C.CAB W/A-FRAME	74.00	ART32305	STREAMLINE COACH S.F.SUP.CHF.	276.00
ART29358	MOTOR BLOCK-RAILBUS W/A-FRAME	74.00	ART32308	STREAMLINE COACH PRR/PENNA	276.00
ART29360	MOTOR FOR 0-4-0	19.00	ART32908	STREAMLINE SET - PRR	926.00
ART29363	PACIFIC GEAR BOX W/WHLS	134.00	ART40101	20' TANK CAR - PRR	38.00
ART29400	GEAR BOX & MOTOR 2-4-2 ROGERS	34.00	ART40103	20' TANK CAR - UP	38.00
ART29401	BRUSH & SPRING	7.00	ART40113	20' TANK CAR - HONEY BEE	38.00
ART29404	RUBBER TIRES 2-4-2 ROGERS	7.00	ART40114	20' TANK CAR BP	35.00
ART29406	BRUSH,SPRING&BUSHING(8)DIESEL	9.00	ART40201	20' FLAT CAR - PRR	38.00
ART29411	BALL BEARING SET (10)	32.00	ART40203	20' FLAT CAR - UP	38.00
ART29500	MARKER LIGHT LONG/BAY-CAB	6.00	ART40205	20' FLAT CAR - B&O	38.00
ART29501	MARKER LIGHTS 2-4-2 ROGERS	6.00	ART40211	20' FLAT CAR - D&RGW	38.00
ART29502	BULB/LONG CAB/SIERRA(10PC)	14.00	ART40225	20' FLAT CAR - CHRISTMAS	38.00
ART29503	BULB & SOCKET SET W/WIRE	9.00	ART40305	20' BOX CAR - B&O	38.00
ART29507	BULB/HVYWT/STRMLINE(2PC)	6.00	ART41001	GONDOLA SOO/COLORMARK	63.00
ART29508	RS-3 MARKER LIGHTS (PR)	9.00	ART41008	GONDOLA PRR/PENNSYLVANIA	63.00
ART29512	DITCH LIGHTS (2)	14.00	ART41012	GONDOLA SR/SOUTHERN RAILWAY	63.00
ART29514	DASH 9 EXTRA WEIGHTS	35.00	ART41102	COV.GONDOLA NEW YORK CENTRAL	68.00
ART29515	WEIGHTS FOR THE SD-45	35.00	ART41103	COV.GONDOLA PITT/LAKE ERIE	68.00
ART29517	E-8 WEIGHTS 3 + SCREWS	30.00	ART41109	COV.GONDOLA ATSF	68.00
ART29600	TRACK TO PACK.CONN.WIRE	5.00	ART41110	COV.GONDOLA UP	68.00
ART29603	ARISTO-LUBE OIL 1.125 OZ.	4.00	ART41112	COV.GONDOLA DENVER RIO GRANDE	68.00
ART29605	10 AMP FUSE FOR TRAIN ENG.	5.00	ART41205	COV.HOPPER ATSF/SANTA FE	82.00
ART29607	MU CABLE	7.00	ART41208	COV.HOPPER UNION PACIFIC	82.00
ART29608	WIRES WITH PLUGS FOR SOUND INS	5.00	ART41224	COV.HOPPER ATSF SM. HERALD BRN	82.00
ART29700	CHAIR KIT-L(6PCS)LONG CABOOSE	9.00	ART41226	COV.HOPPER D&RGW GRAY	82.00
ART29703	DOUBLE CHAIR SET	7.00	ART41227	COV.HOPPER CEN.OF GEORGIA	82.00
ART29704	NEW ROOF WALK FOR FRT CAR	9.00	ART41228	COV.HOPPER WABASH W/FLAG	82.00
ART29706	LOWERED FLOOR FOR ROLLING STOK	14.00	ART41229	COV.HOPPER NEW HAVEN BROWN	82.00
ART29708	LONG CABOOSE ROOF WALK/NEW	14.00	ART41230	COV.HOPPER FRISCO BLACK	82.00
ART29950	TRACK CLEANING PAD	7.00	ART41231	COV.HOPPER GN BILLY GOAT BLUE	82.00
ART30033	TRACK TIES 1' STRAIGHT - USA	1.30	ART41233	COV.HOPPER L&N DIXIE	82.00
ART30060	USA STR.TRACK 2 FT (12)	184.00	ART41303	S.DOME-TANK MOBIL OIL	68.00
ART30090	USA 3' STRAIGHT TRACK	276.00	ART41304	S.DOME-TANK UNION OIL	68.00
ART30103	TRACK TIES CURVED - USA	1.30	ART41308	S.DOME-TANK UP/UNION PACIFIC	68.00
ART30110	USA CURVE TRACK 5' (12)	128.00	ART41309	S.DOME-TANK ATSF/SANTA FE	68.00
ART30112	USA CURVE 6.5 DIAM	168.00	ART41310	S.DOME-TANK PRR/PENNSYLVANIA	68.00
ART30115	USA CURVE TRACK .8'(16)	206.00	ART41323	S.DOME-TANK BAKER'S CHOCOLATE	68.00
ART30116	USA CURVE TRACK 9'	232.00	ART41325	S.DOME-TANK CHRISTMAS	68.00
ART30122	USA CURVE 12.5'	320.00	ART41327	S.DOME-TANK BALLENTINE	68.00
ART30124	USA CURVE TRACK 15' DIAM.	384.00	ART41401P	COAL HOPPER - CHESSIE w/plasti	81.00
ART30194	60 STRAIGHT TRACK (6)	256.00	ART41402P	COAL HOPPER-N&W	81.00
ART30300	USA SWITCH MANUAL RIGHT	40.00	ART41403P	COAL HOPPER PRR	81.00
ART30330	#6 SWITCH MANUAL RIGHT	150.00	ART41404P	COAL HOPPER D&RGW	81.00
ART30335	#6 PARALLEL ADAPTOR	42.00	ART41406P	COAL HOPPER UP w/plastic whl	81.00
ART30340	#6 SWITCH MANUAL LEFT	150.00	ART41407P	COAL HOPPER NORFOLK SO.	81.00
ART30345	#6 WYE SWITCH BRASS US	105.00	ART41409P	COAL HOPPER CONRAIL	81.00
ART30350	USA SWITCH MANUAL LEFT	40.00	ART41410P	COAL HOPPER CHICAGO & NW	81.00
ART30370	SWITCH WIDE MANUAL RIGHT	65.00	ART41413P	COAL HOPPER SR/SO.RAILWAY	81.00
ART30375	SIDING FOR 10' DIAM. SWITCH	20.00	ART41419P	COAL HOPPER - READING & NO.	81.00
ART30380	SWITCH WIDE MANUAL LEFT	65.00	ART41420P	COAL HOPPER 100T - WM RED	81.00
ART30400	CROSSING 19.5	60.00	ART41421P	COAL HOPPER - PRR KEYSTONE	81.00
ART30410	CROSSING 90 DEGREE	40.00	ART41423P	COAL HOPPER - READING	81.00
ART30500	EXTENDER TRACK SET #1 ISA	100.00	ART41424P	COAL HOPPER - ERIE LACK	81.00
ART31001	SIERRA COACH PENNSYLVANIA	127.00	ART41425P	COAL HOPPER - D&H	81.00
ART31001-3	SIERRA SET - PRR	381.00	ART41603	3 DOME-TANK ATSF/SANTA FE	68.00
ART31002	SIERRA COACH B&O BALT&OHIO	127.00	ART41604	3 DOME-TANK UP/UNION PACIFIC	68.00
ART31004	SIERRA COACH DRGW/YELLOW	127.00	ART41607	3 DOME-TANK ESSO	68.00
ART31005	SIERRA COACH ATSF/SANTA FE	127.00	ART41608	3 DOME-TANK MOBIL	68.00
ART31005-3	SIERRA SET - ATSF	381.00	ART41610	3 DOME-TANK OILZUM	68.00
ART31009	SIERRA COACH WPY/WHITE PASS	127.00	ART41611	3 DOME-TANK MARVEL OIL	68.00
ART31009-3	SIERRA SET - WHITE PASS	381.00	ART41612	3 DOME-TANK SHELL OIL	68.00
ART31011	SIERRA COACH D&RGW GREEN	127.00	ART41615	3 DOME-TANK TEXACO	68.00
ART31011-3	SIERRA PASS.SET - D&RGW GREEN	381.00	ART41617	3 DOME-TANK PITTS.PLATE GLASS	68.00
ART31025	SIERRA COACH CHRISTMAS	127.00	ART41801	2 BAY COAL HOPPER PRR	75.00
ART31025-3	SIERRA SET - CHRISTMAS	381.00	ART41802	2 BAY COAL HOPPER ATSF	75.00
ART31301	STD.HVY.WHT.COACH PRR/PENN.	242.00	ART41803	2 BAY COAL HOPPER UP	75.00
ART31302	STD.HVY.WHT.COACH B&O	242.00	ART41804	2 BAY COAL HOPPER D&RGW	75.00
ART31305	STD.HVY.WHT.COACH SO. CRESCENT	242.00	ART41805	2 BAY COAL HOPPER SR	75.00
ART31308	STD.HVY.WHT.COACH UP/UNION PAC	242.00	ART41806	2 BAY COAL HOPPER N & W	75.00
ART31310	STD.HVY.WHT.COACH SO.PAC.DAY	242.00	ART41807	2 BAY COAL HOPPER B & O	75.00
ART31311	STD.HVY.WHT.COACH ATSF	242.00	ART41808	2 BAY COAL HOPPER GN	75.00
ART31332	STD.HVY.WHT.COACH NAPA VALLEY	242.00	ART42101	CABOOSE LONG GREAT NOTHERN	110.00
ART31651	STD.HVY.WHT BAGGAGE PRR	242.00	ART42102	CABOOSE LONG CB&Q/BURLINGTON	110.00
ART31655	STD.HVY.WHT BAGGAGE SO.RWY	242.00	ART42103	CABOOSE LONG RIO GRANDE	110.00
ART31658	STD.HVY.WHT BAGGAGE UP	242.00	ART42104	CABOOSE LONG PRR/PENNSYLVANIA	110.00

ART42106	CABOOSE LONG SANTA FE	110.00	ART46311T	FLAT CAR-STAKE NYC (2)	89.00
ART42107	CABOOSE LONG SP/SO. PACIFIC	110.00	ART46312T	FLAT CAR-STAKE SP (2)	89.00
ART42108	CABOOSE LONG SR/SO. RAILWAY	110.00	ART46361	SEARCHLIGHT PRR/PENNSYLVANIA	113.00
ART42109	CABOOSE LONG B&O/BALTI & OHIO	110.00	ART46362	SEARCHLIGHT UP/UNION PACIFIC	113.00
ART42114	CABOOSE LONG NYC/NY CENTRAL	110.00	ART46364	SEARCHLIGHT ATSF/SANTA FE	113.00
ART42115	CABOOSE LONG CANADIAN PACIFIC	110.00	ART46403T	BULK.FLAT SP (2)	95.00
ART42126	CABOOSE LONG WM/WESTERN MD	110.00	ART46406T	BULK.FLAT PRR (2)	95.00
ART42131	CABOOSE LONG ACL	110.00	ART46409T	BULK.FLAT CHSY (2)	95.00
ART42134	CABOOSE LONG CONRAIL	110.00	ART46415T	BULK.FLAT - UP (2)	95.00
ART42200	BOBBER CABOOSE UNDEC (RED)	38.00	ART46710	SNOW PLOW - UP	140.00
ART42201	BOBBER CABOOSE PRR/PENNA	38.00	ART46890	COUPLER-MATE FOR ROADRLR	21.00
ART42208	BOBBER CABOOSE UP/UNION PAC	38.00	ART46953	TRACK CLEANING CAR - UP	70.00
ART42209	BOBBER CABOOSE B&O/BALTI.& OH	38.00	ART46954	TRACK CLEANING CAR - ATSF	70.00
ART42210	BOBBER CABOOSE DRGW/RIO GRANDE	38.00	ART46955	TRACK CLEANING CAR - SR	70.00
ART42211	BOBBER CABOOSE ATSF/SANTA FE	38.00	ART50002P	53' EVANS BOX CAR ATSF	80.00
ART42215	BOBBER CABOOSE WHITE PASS	38.00	ART50003P	53' EVANS BOX CARS CSX	80.00
ART42225	BOBBER CABOOSE CHRISTMAS	38.00	ART50004P	53' EVANS BOX CAR NORFOLK SO.	80.00
ART42233	BOBBER CABOOSE BP	36.00	ART50005P	53' EVANS BOX CAR B & M	80.00
ART45104	40' DBL.DOOR BOXCAR ACL	75.00	ART50006P	53' EVANS BOX CAR UP	80.00
ART45105	40' DBL.DOOR BOXCAR NYC	75.00	ART50007P	53' EVANS BOX CAR C&NW	80.00
ART45106	40' DBL.DOOR BOXCAR PRR	75.00	ART50010P	53' EVANS BOX CAR TROPICANA	80.00
ART45107	40' DBL.DOOR BOXCAR C&NW	75.00	ART50011P	53' EVANS BOX CAR BN	80.00
ART45108	40' DBL.DOOR BOXCAR GN	75.00	ART50012P	53' EVANS BOX CAR MISSOURI PAC	80.00
ART45200	40' PLUG DOOR BOX CAR UNDEC	75.00	ART50014P	53' EVANS BOX CAR - WP	80.00
ART45201	40' PLUG DOOR BOX CAR NH	75.00	ART50015P	53' EVANS BOX CAR - RAILBOX	80.00
ART45202	40' PLUG DOOR BOX CAR FGE	75.00	ART50016P	53' EVANS BOX CAR PAN AM	80.00
ART45203	40' PLUG DOOR BOX CAR DT&C	75.00	ART50092P	53' EVANS BOX CAR WP	80.00
ART45205	40' PLUG DOOR BOX CAR CNJ	75.00	ART50093P	53' EVANS BOX CAR TP&W	80.00
ART45206	40' PLUG DOOR BOX CAR FRISCO	75.00	ART50098P	53' EVANS BOX CAR M&NS	80.00
ART45207	40' PLUG DOOR BOX CAR ATSF	75.00	ART60001	SEATED TRAIN ENGINEER	7.50
ART45208	40' PLUG DOOR BOX CAR PRR	75.00	ART60003	TRAIN BRAKEMAN	7.50
ART46000	BOX CAR(STEEL)PTD w/DATE	75.00	ART60004	MAN IN SUIT	7.50
ART46003	BOX CAR(STEEL)ATSF/SANTA FE	75.00	ART60006	MAN WITH SATCHEL	7.50
ART46004	BOX CAR(STEEL)PRR/PENNA.	75.00	ART60007	MAN IN SHIRT	7.50
ART46006	BOX CAR(STEEL)GREAT NORTHERN	75.00	ART60009	DINING CAR WAITER	7.50
ART46008	BOX CAR(STEEL)B&O/SENTINEL	75.00	ART60010	SOLDIER W/DUFFLE BAG	9.50
ART46010	BOX CAR(STEEL)UP/UNION PAC.	75.00	ART60011	WOMAN CONDUCTOR	7.50
ART46011	BOX CAR(STEEL)B&O TIMESAVER	75.00	ART60014	SEATED PASSENGER CHILD/MALE	7.50
ART46012	BOX CAR(STEEL)DL&W/PHOEBE SNO	75.00	ART60015	STATION MASTER	7.50
ART46018	BOX CAR(STEEL)EL/ERIE-LACK.	75.00	ART60016	TRAIN FIREMAN	7.50
ART46021	BOX CAR(STEEL)SP OVERNIGHT	75.00	ART60017	SHEPHERD W/CAPE AND DOG	7.50
ART46023	BOX CAR(STEEL)PRR/100TH ANNIV	75.00	ART60018	CONDUCTOR WITH LANTERN	7.50
ART46026	BOX CAR(STEEL)WP/WEST.PACIFIC	75.00	ART60019	SEATED MAN W/CIGAR	7.50
ART46027	BOX CAR(STEEL)ARR/ALASKA	75.00	ART60020	SEATED CHILD/GIRL	7.50
ART46028	BOX CAR(STEEL)BCR/BUFFALO CRK	75.00	ART60025	SEATED SANTA ENGINEER	7.50
ART46029	BOX CAR(STEEL)NYS&W/ SUSIE-Q	75.00	ART60026	STANDING SANTA	7.50
ART46033	BOX CAR(STEEL)ONR/ONTARIO	75.00	ART60027	HOB0 W/POLE AND BAG	9.50
ART46045	BOX CAR(STEEL)BESS.& LAKE ERIE	75.00	ART60028	HOB0 SEATED ON TREE STUMP	9.50
ART46047CD	BOX CAR 40' NYC	98.00	ART60029	HOB0 - FAT KING OF THE ROAD	9.50
ART46048CD	40' BOX CAR SP&S	98.00	ART60031	POLICEMAN	7.50
ART46049CD	BOX CAR 40' MKT	98.00	ART60032	STATE TROOPER	7.50
ART46050CD	BOX CAR 40' ATSF FOOD ONLY	98.00	ART60034	TEXAS RANGER	7.50
ART46051CD	BOX CAR 40' COTTON BELT BLUE	98.00	ART60035	FARMER IN COVERALLS	7.50
ART46056	BOX CAR(STEEL)SO.RAILWAY	75.00	ART60036	LUMBERJACK	7.50
ART46058	BOX CAR(STEEL)BRITISH COLUMBI	75.00	ART60037	WEST POINT CADET-MALE	7.50
ART46061	BOX CAR(STEEL)GTW	75.00	ART60039	US ARMY MARINE - MALE	7.50
ART46062	BOX CAR(STEEL)D&RGW BROWN	75.00	ART60040	US ARMY SOLDIER-FEMALE	7.50
ART46063	BOX CAR(STEEL) BN	75.00	ART60041	US NAVY SAILOR-MALE	7.50
ART46064-4	BOX CAR(STEEL)ATSF 4 ASST	300.00	ART60042	WOMAN WITH BABY	7.50
ART46066	BOX CAR(STEEL)ERIE	75.00	ART60043	BRIDE	7.50
ART46067	BOX CAR(STEEL)CONRAIL	75.00	ART60044	GROOM	7.50
ART46069	BOX CAR(STEEL)SOO LINE	75.00	ART60045	CLOWN #1	7.50
ART46071	BOX CAR(STEEL)CHESSIE CAT	75.00	ART60046	CLOWN #2	7.50
ART46072	BOX CAR(STEEL)CNJ	75.00	ART60047	CLOWN #3	9.50
ART46078	BOX CAR(STEEL)N & W	75.00	ART60048	CLOWN #4	9.50
ART46101	STOCK CAR ARMOUR	75.00	ART60049	CLOWN #5	9.50
ART46103	STOCK CAR UP/UNION PACIFIC	75.00	ART60050	ICE SKATER-MALE	9.50
ART46105	STOCK CAR DRGW/RIO GRANDE	75.00	ART60051	ICE SKATER-FEMALE	9.50
ART46106	STOCK CAR ATSF/SANTA FE	75.00	ART60052	ICE SKATER MAN W/SCARF	9.50
ART46107	STOCK CAR SR/SO.RAILWAY	75.00	ART60054	ICE SKATER-FEMALE W/SCARF	9.50
ART46108	STOCK CAR GN/GREAT NORTHERN	75.00	ART60055	ICE SKATER-MALE RACER	9.50
ART46109	STOCK CAR PRR/PENNSYLVANIA	75.00	ART60056	HOB0 CATCHING GOOSE	7.50
ART46111	STOCK CAR M-K-T/KATY	75.00	ART60059	U.S. AIRFORCE OFFICER W/BAG	9.50
ART46115	STOCK CAR WP/WESTERN PACIFIC	75.00	ART60060	MALE SPORTSMAN W/GOLF CLUBS	9.50
ART46117	STOCK CAR B&O/BALTIMORE&OHIO	75.00	ART60061	MALE SPORTSMAN W/TENNIS	7.50
ART46125	STOCK CAR CHRISTMAS	75.00	ART60062	FEMALE W/TENNIS DRESS	7.50
ART46201D	REEFER PF&E W/MET.WHL+BB	388.00	ART60063	FEMALE W/BABY	9.50
ART46202	REEFER SCHLITZ BEER	75.00	ART60064	SEATED MALE READING	7.50
ART46203	REEFER PABST BEER	75.00	ART60066	SEATED FEMALE SEWING	7.50
ART46206	REEFER BLATZ BEER	75.00	ART60067	SEATED FEMALE W/BABY	9.50
ART46210	REEFER RED ROSE ICE CREAM	75.00	ART60068	TRACK WORKER W/PICK	9.50
ART46211	REEFER STEWART'S ROOT BEER	75.00	ART60069	TRACK WORKER W/SLEDGE HAMMER	9.50
ART46213	REEFER BALLANTINE BEER	75.00	ART60070	WORKER W/WHEEL BARREL	9.50
ART46218	REEFER ROBIN HOOD BEER	75.00	ART60071	PHOTOGRAPHER W/CAMERA	9.50
ART46222	REEFER NYC/20TH CENTURY BEER	75.00	ART60073	COWBOY W/SADDLE	9.50
ART46223	REEFER FGE/FRUIT GROWERS	75.00	ART60075	MAN FISHING	9.50
ART46224	REEFER WIF/WEST INDIA FRUIT	75.00	ART60076	WORKMAN W/ JACK HAMMER	9.50
ART46225	REEFER CHRISTMAS/NO.POLE	75.00	ART60077	WORKMAN FOR COMPRESSOR	9.50
ART46250D	REEFER 4' MEAT PACKING (4ASST)	388.00	ART60077B	COMPRESSOR	9.50
ART46259	REEFER STEEL 40' BREX	75.00	ART60078	MAN SHOVELING	7.50
ART46260	REEFER STEEL NW REF. LINE NWX	75.00	ART60080	WOMAN WORKER W/WRENCH	7.50
ART46261D	REEFER 40' PFE SINGLE HERALD	388.00	ART60081	WOMAN WORKER W/SHOVEL	7.50
ART46277	REEFER CANADIAN NATIONAL	75.00	ART60082	FIGURE - SEATED - SELMA	7.50



ART60083	FIGURE - SEATED - STUDENT	7.50	ART9000	PARTS BOOK-EXPLODED VIEW	7.00
ART60084	FIGURE - SEATED EATING	7.50	ART90010	HOW MODEL TRAINS ARE MADE DVD	20.00
ART60085	FIGURE - SEATED - YOUNG WOMAN	7.50	ART92002	2002/3 CATALOG	6.00
ART60086	FIGURE - SEATED CHILD W/RR	7.50	ART92005	2005 COLOR CATALOG	6.00
ART60087	FIGURE - SEATED - MAN IN SUIT	7.50	ART92007	2007 COLOR CATALOG	7.00
ART60088	FIGURE - SEATED W/BINOCULARS	7.50	ART92008	ARISTO-CRAFT 116 PAGE CAT.	7.00
ART60089	FIGURE - SEATED - LINDA	7.50	CRE0001	GRAIN OF WHEAT 12V CLEAR	42.00
ART60090	FIGURE - SEATED - SHIRLEY	7.50	CRE0004	GRAIN OF WHEAT 12 V AMBER	42.00
ART60091	FIGURE - SEATED - TERRY	7.50	CRE0005	GRAIN OF WHEAT 4 ASST COLORS	42.00
ART60092	FIGURE-SEATED-MARYANN W/HAT	7.50	CRE00073	MICRO SWITCH W/LEVER 10PCS	11.00
ART60093	FIGURES- SEATED - MOTHER & CHIL	9.50	CRE0010	GRAIN OF RICE BULBS CLEAR (40	42.00
ART60094	FIGURE - SEATED - KATHRYN	7.50	CRE0011	GRAIN OF RICE 10EA. CRGA (40)	42.00
ART60102	8 PINE TREE	6.50	CRE29335	DLX. P&P DIG.SOUND E-8	160.00
ART60103	12 PINE TREE	7.50	CRE29428	DALLEE/ARISTO INSTALLATION KIT	18.00
ART60197	TURNTABLE FOR FIGURES	20.00	CRE29429	TRACK MAGNET (6)	4.00
ART60300	TEDDY BEAR 2 JOINTED	6.50	CRE29431	REED SWITCHES (2)	7.00
ART60301	TEDDY BEAR JOINTED 8"	6.50	CRE29433	8.4V NIMH BATTERY 200MA	8.00
ART60302	TEDDY BEAR ENGINEER 2	6.50	CRE29440	DALLEE DIG. SOUND U-25B	110.00
ART60303	TEDDY BEAR CONDUCTOR 2	6.50	CRE29444	DALLEE DIG.SOUND DASH 9	110.00
ART60405	SCRAP LOAD FOR GONDOLA	18.00	CRE29449	DALLEE DIG.SOUND MIKADO	110.00
ART60407	COAL LOAD 100 TON HOPPER	23.00	CRE29601	CREST- SMOKE FLUID 4 OZ.	4.00
ART62005	MILITARY TRAVELERS SET	38.00	CRE29602	CONDUCTIVE GREASE 2 OZ.	6.50
ART62008	ICE SKATERS SET	41.00	CRE29603	CREST - LUBE - OIL 1.125 OZ.	4.25
ART62009	SPORTING PEOPLE SET	34.00	CRE29606	CONDUCTIVE GREASE 4 OZ.	12.00
ART62010	PUBLIC SAFETY UNIFORMED SET	34.00	CRE29608	TE OUTPUT GLASS FUSE (5)	3.00
ART64001	HOUSE ACCESS. SET	19.00	CRE55001	TRAIN ENGINEER RECEIVER	53.00
ART66002	FLOCKED BABY ELEPHANT	2.98	CRE55002	H.O. TRAIN ENG RX 6 PACK	210.00
ART66006	FLOCKED BEAR	2.98	CRE55004	RECEIVER 2 PACK	95.00
ART66007	FLOCKED LIONESS	2.98	CRE55401	CONTROLLER	70.00
ART66008	FLOCKED GORILLA	2.98	CRE55460	ULTIMA 10 AMP POWER SUPPLY	135.00
ART66009	FLOCKED WHITE TIGER	2.98	CRE55465	ELITE DUAL VOLATAGE POWER SUPP	179.00
ART66010	FLOCKED TIGER	2.98	CRE55468	EVEREST POWER SUPPLY 15A 24V	210.00
ART66011	FLOCKED LION	2.98	CRE55470	D.C. TRAIN ENGINEER SET	200.00
ART66012	FLOCKED ELEPHANT	3.98	CRE55471	DC TRAIN ENGINEER RECEIVER	135.00
ART66013	FLOCKED ZEBRA	2.98	CRE55474	DC/RC WIRELESS ACCESS SWITCH	74.00
ART66014	FLOCKED GIRAFFE	2.98	CRE55475	DC/RC 5 SWITCH RX	80.00
ART70002	BUMPER STICKER - ARISTO-CRAFT	2.00	CRE55480	BASIC TRAIN ENGINEER 30' 2 AMP	101.00
ART7100	VICTORIAN STATION BUILT-UP	134.00	CRE55491	ON BOARD TRAIN ENG. 75	174.00
ART7101	COVERED BRIDGE	61.00	CRE55492	ONBOARD RX PLUS TX	285.00
ART7104	OVER & UNDER TRESTLE SET	39.00	CRE55493	GEL CELL BATTERY 6V 3.2 AMP x3	53.00
ART7106	12 PC.TRESTLE SET 8 1/2	30.00	CRE55494	CHARGER FOR GEL CELLS	94.00
ART7114	TRANSMISSION TOWERS (PAIR)	40.00	CRE55497	BATTERY CAR R/C W/O BATTERY	150.00
ART7200	THE PASSENGER DEPOT - BUILT-UP	70.00	CRE55498	ON-BOARD COOLING FAN	21.00
ART7201	THE FREIGHT DEPOT - BUILT-UP	70.00	CRE55499	FAN FOR 55471 ABOVE 5 AMPS	21.00
ART7202	THE CROSSING SHANTY - BUILT-UP	45.00	CRE55601	AUTO CUTOFF FOR GELL BATTERY	17.00
ART7203A	FARM HOUSE / WHITE w.GRN TRIM	85.00	CRE55602	WIRE HARNESS FOR BATTERY SET	11.00
ART7203B	FARMHOUSE / TAN w.WHITE TRIM	85.00	CRE55610	LI-ON BATTERY 2AMP 21.5V	100.00
ART7203C	FARM HOUSE - BLUE W/WHITE	85.00	CRE55611	Y PLUG FOR BATTERY PARALLEL	7.00
ART7203D	FARMHOUSE - YELLOW W/WHITE	85.00	CRE55612	BATTERY BOX 6 AA FOR REM.SW.	6.00
ART7206	CHURCH	125.00	CRE55620	CHARGER FOR LI-ON BATTERIES	32.00
ART7209	CEMETARY SET #2	30.00	CRE55621	ADAPTOR PLUG FOR LI-ON BAT CHG	3.00
ART7210A	TRACT HOUSE BUILT UP WHITE	160.00	CRE55622	PLUG ADAPTOR FOR 55620 for Eur	3.00
ART7210B	TRACT HOUSE BUILT UP GREEN	160.00	CRE56802	ON BOARD VIDEO CAMERA	100.00
ART7401	FOAM PORTAL	20.00	SJ10206	WIRE CONNECTOR	5.00
ART7402	DOUBLE PORTAL	40.00	SJ10606	BALL HEX DRIV ER 3"	3.30
ART7403	WINGS FOR FOAM PORTALS	75.00	SJ10706	6" BALL HEX DRIV ER	3.90
ART7404	FOAM VIADUCT	65.00	SJ40029	OVER RAIL CLAMP BRASS(50pcs)	102.50
ART7405	FOAM VIADUCT PIERS (2)	40.00	SJ40059	RAIL CLAMP BRASS (50 pcs)	97.50
ART80102C	CLASSIC C-16 COAL DRGW+CABOOSE	420.00	SJ40105	RAIL CLAMP BRASS 10 pcs	20.00
ART80114C	CLASSIC C-16 D&RGW BLK+CABOOSE	420.00	SJ40272	DOUBLE CLAMP BRASS (2 PCS)	8.40
ART80202C	CLASSIC C-16 WOOD DRGW+CABOOSE	420.00	SJ40282	POWER CLAMP (2 PCS)	2.90
ART80212C	CLASSIC C-16 WOOD UP+CABOOSE	420.00	SJ60059	RAIL CLAMP SS (50 PCS)	137.50
ART80214C	CLASSIC C-16 WOOD D&RGW+CABOO	420.00	SJ60105	RAIL CLAMP SS (10PCS)	28.00
ART81001	CLASSIC GONDOLA DRGW/RIO GRND	45.00	SJ60272	DOUBLE CLAMP SS (2 PCS)	12.00
ART81002	CLASSIC GONDOLA COLO.& SO.	45.00	SJ60282	POWER SUPPLY SS (2 PCS)	3.80
ART81007	CLASSIC GONDOLA WPY/WH.PASS	45.00	SJ80312	RAIL CLAMP INSUL.FOR BRASS 2PC	4.00
ART81401	CLASSIC COAL HOPPER RIO GRAND	55.00	SJ80562	PLASTIC CLAMP FOR SS( 2 PCS)	5.60
ART81402	CLASSIC COAL HOPPER COLO.& SO	55.00			
ART81407	CLASSIC COAL HOPPER WH.PASS	55.00			
ART82102	CLASSIC LNG.CABOOSE CO.& SO	110.00			
ART82114	CLASSIC LONG CABOOSE D&RGW RED	110.00			
ART83101C	CLASSIC RAILBUS D&RGW	275.00			
ART83102C	CLASSIC REO RAILBUS CO.& SO	275.00			
ART83108C	CLASSIC REO RAILBUS ATSF	275.00			
ART83111C	CLASSIC REO RAILBUS WHT.PASS	275.00			
ART83115C	CLASSIC RAILBUS U.P.	275.00			
ART84196	LIVE STEAM BUTANE FILLER VAL	30.00			
ART84198	CD VIDEO OF LIVE STEAM	6.00			
ART84199	STEAM OIL 1 QT.	13.00			
ART86001	CLASSIC BOXCAR(WOOD)RIO GRNDE	55.00			
ART86002	CLASSIC BOXCAR(WOOD)CO.& SO	55.00			
ART86007	CLASSIC BOXCAR(WOOD)WH.PASS	55.00			
ART86201	CLASSIC REEFER(WOOD)RIO GRNDE	60.00			
ART86202	CLASSIC REEFER(WOOD)CO.& SO.	60.00			
ART86207	CLASSIC REEFER(WOOD)WH.PASS	60.00			
ART86401	CLASSIC FLTCARw/REEL RIO GRND	57.00			
ART86402	CLASSIC FLTCARw/REEL CO.& SO	57.00			
ART86407	CLASSIC FLTCARw/REEL WH.PASS	57.00			
ART86500	LOG CAR	80.00			
ART89101	FREIGHT TRUCK(PR.)W/O COUPLER	27.00			
ART89102	TOOL SET W/6 PIECES	11.00			
ART89103	CABOOSE TRUCK W/METAL WHEELS	48.00			
ART89200	COUPLER-KNUCKLE/PAIR	11.00			

### Please Note

The In-Stock List consists of products on-hand in the computerized inventory database on the date mentioned at the start of the list and is only accurate for that date. The In-Stock List includes all products but is not limited to factory samples, show samples, and product held for customers. We can not guarantee all product listed as in-stock is available for sale or distribution.

For periodically updated lists and new item information, please visit the Aristo-Craft webpage at [www.aristocraft.com](http://www.aristocraft.com).